

For Research Use Only

C19orf43 Polyclonal antibody

Catalog Number: 19420-1-AP **1 Publications**



Basic Information

Catalog Number: 19420-1-AP	GenBank Accession Number: BC000216	Purification Method: Antigen affinity purification
Size: 150ul , Concentration: 550 µg/ml by Nanodrop and 233 µg/ml by Bradford method using BSA as the standard;	GeneID (NCBI): 79002	Recommended Dilutions: WB 1:500-1:1000 IHC 1:20-1:200
Source: Rabbit	Full Name: chromosome 19 open reading frame 43	
Isotype: IgG	Calculated MW: 176 aa, 18 kDa	
Immunogen Catalog Number: AG13747	Observed MW: 28 kDa	

Applications

Tested Applications: IHC, WB, ELISA	Positive Controls: WB : A431 cells, HEK-293 cells IHC : human heart tissue,
Cited Applications: IP, WB	
Species Specificity: human, mouse, rat	
Cited Species: human	
Note-IHC: suggested antigen retrieval with TE buffer pH 9.0; (*) Alternatively, antigen retrieval may be performed with citrate buffer pH 6.0	

Background Information

C19orf43, also named as MGC2803 and fSAP18, is an Uncharacterized protein. It is 176aa, 18.4kd. We used the antibody raised from the C19orf43 protein, we get a ~28kd in human placenta, 293 and A431 cell.

Notable Publications

Author	Pubmed ID	Journal	Application
Samantha Sze	37843976	Cell Rep	WB, IP

Storage

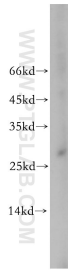
Storage:
Store at -20°C. Stable for one year after shipment.
Storage Buffer:
PBS with 0.02% sodium azide and 50% glycerol pH 7.3.
Aliquoting is unnecessary for -20°C storage

*** 20ul sizes contain 0.1% BSA

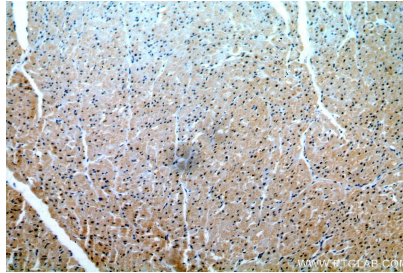
For technical support and original validation data for this product please contact:
T: 1 (888) 4PTGLAB (1-888-478-4522) (toll free in USA), or 1(312) 455-8498 (outside USA)
E: proteintech@ptglab.com
W: ptglab.com

This product is exclusively available under Proteintech Group brand and is not available to purchase from any other manufacturer.

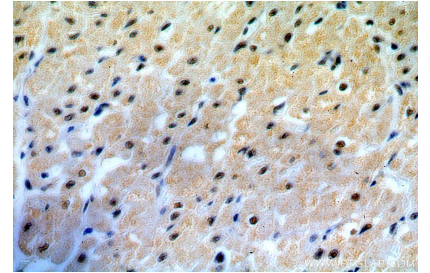
Selected Validation Data



A431 cells were subjected to SDS PAGE followed by western blot with 19420-1-AP (C19orf43 antibody) at dilution of 1:300 incubated at room temperature for 1.5 hours.



Immunohistochemical analysis of paraffin-embedded human heart using 19420-1-AP (C19orf43 antibody) at dilution of 1:50 (under 10x lens).



Immunohistochemical analysis of paraffin-embedded human heart using 19420-1-AP (C19orf43 antibody) at dilution of 1:50 (under 40x lens).