

For Research Use Only

HMP19 Polyclonal antibody

Catalog Number: 19423-1-AP

1 Publications



Basic Information

Catalog Number:

19423-1-AP

Size:

150ul, Concentration: 200 ug/ml by Nanodrop and 173 ug/ml by Bradford method using BSA as the standard;

Source:

Rabbit

Isotype:

IgG

Immunogen Catalog Number:

AG13751

GenBank Accession Number:

BC002619

GeneID (NCBI):

51617

UNIPROT ID:

Q9Y328

Full Name:

HMP19 protein

Calculated MW:

171 aa, 19 kDa

Purification Method:

Antigen affinity purification

Recommended Dilutions:

IHC 1:20-1:200

IF/ICC 1:10-1:100

Applications

Tested Applications:

IHC, IF/ICC, ELISA

Species Specificity:

human, mouse, rat

Positive Controls:

IHC : human hepatocirrhosis tissue,

IF/ICC : HepG2 cells,

Note-IHC: suggested antigen retrieval with *TE buffer pH 9.0*; (*) Alternatively, antigen retrieval may be performed with *citrate buffer pH 6.0*

Notable Publications

Author	Pubmed ID	Journal	Application
Hiroshi Kurahara	27012470	Int J Cancer	

Storage

Storage:

Store at -20°C. Stable for one year after shipment.

Storage Buffer:

PBS with 0.02% sodium azide and 50% glycerol pH 7.3.

Aliquoting is unnecessary for -20°C storage

***** 20ul sizes contain 0.1%BSA**

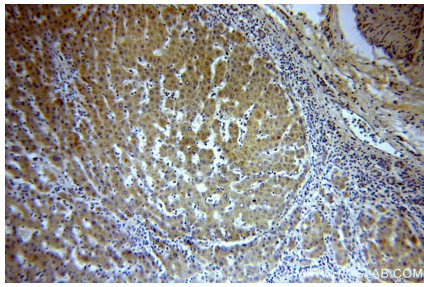
For technical support and original validation data for this product please contact:

T: 1 (888) 4PTGLAB (1-888-478-4522) (toll free in USA), or 1(312) 455-8498 (outside USA)

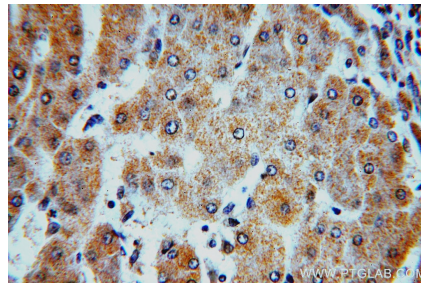
E: proteintech@ptglab.com
W: ptglab.com

This product is exclusively available under Proteintech Group brand and is not available to purchase from any other manufacturer.

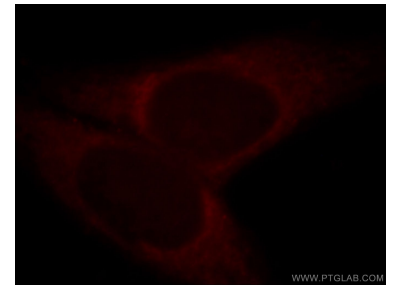
Selected Validation Data



Immunohistochemical analysis of paraffin-embedded human hepatocirrhosis using 19423-1-AP (HMP19 antibody) at dilution of 1:50 (under 10x lens).



Immunohistochemical analysis of paraffin-embedded human hepatocirrhosis using 19423-1-AP (HMP19 antibody) at dilution of 1:50 (under 40x lens).



Immunofluorescent analysis of HepG2 cells, using HMP19 antibody 19423-1-AP at 1:25 dilution and Rhodamine-labeled goat anti-rabbit IgG (red).