

For Research Use Only

PIH1D1 Polyclonal antibody

Catalog Number: 19427-1-AP

10 Publications



Basic Information

Catalog Number:

19427-1-AP

Size:

150ul, Concentration: 850 ug/ml by Nanodrop and 353 ug/ml by Bradford method using BSA as the standard;

Source:

Rabbit

Isotype:

IgG

Immunogen Catalog Number:

AG13759

GenBank Accession Number:

BC001108

GeneID (NCBI):

55011

UNIPROT ID:

Q9NWS0

Full Name:

PIH1 domain containing 1

Calculated MW:

290 aa, 32 kDa

Observed MW:

39 kDa

Purification Method:

Antigen affinity purification

Recommended Dilutions:

WB 1:1000-1:6000

IP 0.5-4.0 ug for 1.0-3.0 mg of total protein lysate

IHC 1:20-1:200

IF/ICC 1:10-1:100

Applications

Tested Applications:

WB, IHC, IF/ICC, IP, ELISA

Cited Applications:

WB, IHC, CoIP

Species Specificity:

human, mouse, rat

Cited Species:

human, mouse, rat

Note-IHC: suggested antigen retrieval with TE buffer pH 9.0; (*) Alternatively, antigen retrieval may be performed with citrate buffer pH 6.0

Positive Controls:

WB: A431 cells, human testis tissue, human uterus tissue, mouse eye tissue, HeLa cells, mouse ovary tissue, mouse testis tissue, rat testis tissue

IP: HeLa cells,

IHC: human lung tissue, human ovary tissue

IF/ICC: HeLa cells,

Background Information

PIH1D1 (PIH1 domain-containing protein 1; also known as PIH1 or NOP17), is a ortholog of the yeast nucleolar protein NOP17. PIH1D1 is a conserved subunit of the R2TP complex participating in the assembly of snoRNP and RNA polymerase II complexes. PIH1D1 may also function as a novel modulator of apoptosis pathway.

Notable Publications

Author	Pubmed ID	Journal	Application
Yukiko Imai	28527011	Chromosoma	WB
Yoann Abel	35150569	Nucleic Acids Res	WB, CoIP
Paul Yenerall	31883965	Cell Chem Biol	WB

Storage

Storage:

Store at -20°C. Stable for one year after shipment.

Storage Buffer:

PBS with 0.02% sodium azide and 50% glycerol pH 7.3.

Aliquoting is unnecessary for -20°C storage

*** 20ul sizes contain 0.1% BSA

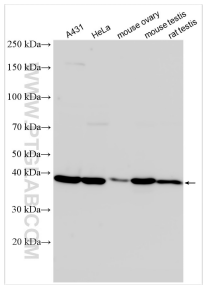
For technical support and original validation data for this product please contact:

T: 1 (888) 4PTGLAB (1-888-478-4522) (toll free in USA), or 1(312) 455-8498 (outside USA)

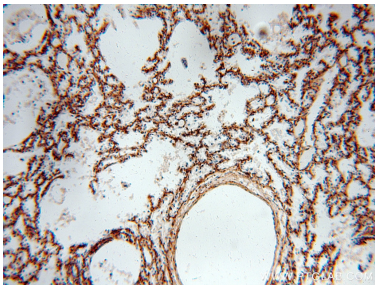
E: proteintech@ptglab.com
W: ptglab.com

This product is exclusively available under Proteintech Group brand and is not available to purchase from any other manufacturer.

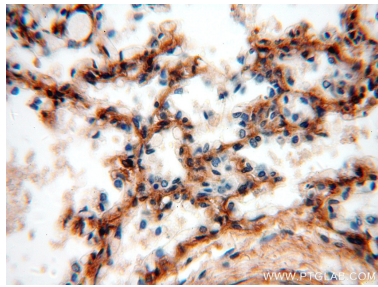
Selected Validation Data



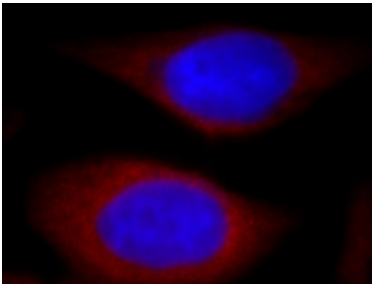
Various lysates were subjected to SDS PAGE followed by western blot with 19427-1-AP (PIH1D1 antibody) at dilution of 1:3000 incubated at room temperature for 1.5 hours.



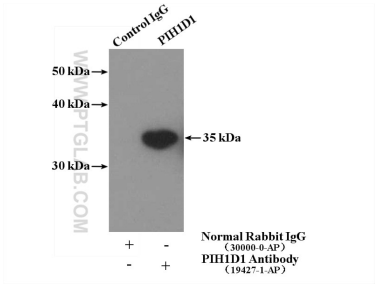
Immunohistochemical analysis of paraffin-embedded human lung using 19427-1-AP (PIH1D1 antibody) at dilution of 1:100 (under 10x lens).



Immunohistochemical analysis of paraffin-embedded human lung using 19427-1-AP (PIH1D1 antibody) at dilution of 1:100 (under 40x lens).



Immunofluorescent analysis of HeLa cells, using PIH1D1 antibody 19427-1-AP at 1:25 dilution and Rhodamine-labeled goat anti-rabbit IgG (red). Blue pseudocolor = DAPI (fluorescent DNA dye).



IP result of anti-PIH1D1 (IP:19427-1-AP, 4ug; Detection:19427-1-AP 1:1000) with HeLa cells lysate 1200ug.