

For Research Use Only

SEZ6L2 Polyclonal antibody

Catalog Number: 19428-1-AP



Basic Information

Catalog Number:

19428-1-AP

Size:

150ul , Concentration: 600 ug/ml by Nanodrop;

Source:

Rabbit

Isotype:

IgG

Immunogen Catalog Number:

AG13760

GenBank Accession Number:

BC000567

GeneID (NCBI):

26470

UNIPROT ID:

Q6UXD5

Full Name:

seizure related 6 homolog (mouse)-like 2

Calculated MW:

910 aa, 98 kDa

Observed MW:

150 kDa

Purification Method:

Antigen affinity purification

Recommended Dilutions:

WB 1:1000-1:4000

Applications

Tested Applications:

WB, ELISA

Species Specificity:

human, mouse, rat

Positive Controls:

WB : mouse brain tissue, rat brain tissue

Background Information

Seizure 6-like protein 2 (SEZ6L2) is a type 1 transmembrane protein predominantly expressed in the brain. It belongs to the seizure-related gene 6 (SEZ6) family, which contains SEZ6, SEZ6L and SEZ6L2. SEZ6 family members have been shown to influence synapse numbers and dendritic morphology and are linked to various neurological and psychiatric disorders (PMID: 33936031). SEZ6L2 is a part of the AMPA receptor and acts as a scaffolding protein to link GluR1 to adducin (PMID: 29032200). Overexpression of SEZ6L2 has been reported in a variety of cancers, including lung cancer, hepatocellular carcinoma, thyroid carcinoma, cholangiocarcinoma (PMID: 16863507; 35117286; 35284305; 32148567). SEZ6L2 can be glycosylated and the apparent molecular weight can be raised to 150-170 kDa (PMID: 26698217; 24272587).

Storage

Storage:

Store at -20°C. Stable for one year after shipment.

Storage Buffer:

PBS with 0.02% sodium azide and 50% glycerol pH 7.3.

Aliquoting is unnecessary for -20°C storage

*** 20ul sizes contain 0.1% BSA

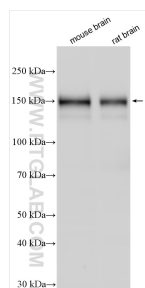
For technical support and original validation data for this product please contact:

T: 1 (888) 4PTGLAB (1-888-478-4522) (toll free in USA), or 1(312) 455-8498 (outside USA)

E: proteintech@ptglab.com
W: ptglab.com

This product is exclusively available under Proteintech Group brand and is not available to purchase from any other manufacturer.

Selected Validation Data



Various lysates were subjected to SDS PAGE followed by western blot with 19428-1-AP (SEZ6L2 antibody) at dilution of 1:2000 incubated at room temperature for 1.5 hours.