

For Research Use Only

# ALDH3B1 Polyclonal antibody

Catalog Number: 19446-1-AP

Featured Product

4 Publications



## Basic Information

<b>Catalog Number:</b> 19446-1-AP	<b>GenBank Accession Number:</b> BC002553	<b>Purification Method:</b> Antigen affinity purification
<b>Size:</b> 150ul , Concentration: 400 µg/ml by Nanodrop and 347 µg/ml by Bradford method using BSA as the standard;	<b>GeneID (NCBI):</b> 221	<b>Recommended Dilutions:</b> WB 1:200-1:1000 IHC 1:20-1:200
<b>Source:</b> Rabbit	<b>Full Name:</b> aldehyde dehydrogenase 3 family, member B1	
<b>Isotype:</b> IgG	<b>Calculated MW:</b> 52 kDa	
<b>Immunogen Catalog Number:</b> AG7025	<b>Observed MW:</b> 55 kDa	

## Applications

<b>Tested Applications:</b> IHC, WB, ELISA	<b>Positive Controls:</b> WB : RAW 264.7 cells,
<b>Cited Applications:</b> IHC, WB	<b>IHC :</b> human lung cancer tissue, human renal cell carcinoma tissue
<b>Species Specificity:</b> human, mouse	
<b>Cited Species:</b> human, mouse	

**Note-IHC: suggested antigen retrieval with TE buffer pH 9.0; (\*) Alternatively, antigen retrieval may be performed with citrate buffer pH 6.0**

## Background Information

ALDH3B1(Aldehyde dehydrogenase family 3 member B1) is also named as ALDH7 and belongs to the aldehyde dehydrogenase family. It catalyzes fatty and aromatic aldehydes. ALDH3B1 may play a role in the detoxification of aldehydes produced during oxidative stress. This protein has 2 isoforms produced by alternative splicing.

## Notable Publications

Author	Pubmed ID	Journal	Application
Carlos J Diaz Osterman	31478830	Elife	WB
Zhenjie Wu	36327089	Cell Stress Chaperones	WB
Zeyu Wang	35116021	Front Immunol	WB

## Storage

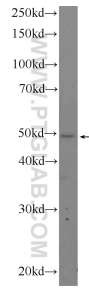
**Storage:**  
Store at -20°C. Stable for one year after shipment.  
**Storage Buffer:**  
PBS with 0.02% sodium azide and 50% glycerol pH 7.3.  
Aliquoting is unnecessary for -20°C storage

\*\*\* 20ul sizes contain 0.1% BSA

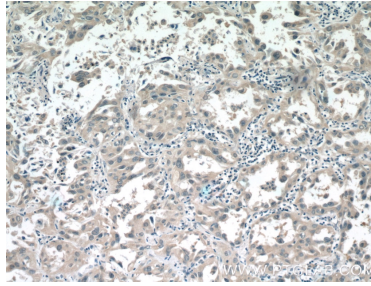
For technical support and original validation data for this product please contact:  
T: 1 (888) 4PTGLAB (1-888-478-4522) (toll free in USA), or 1(312) 455-8498 (outside USA)  
E: proteintech@ptglab.com  
W: ptglab.com

This product is exclusively available under Proteintech Group brand and is not available to purchase from any other manufacturer.

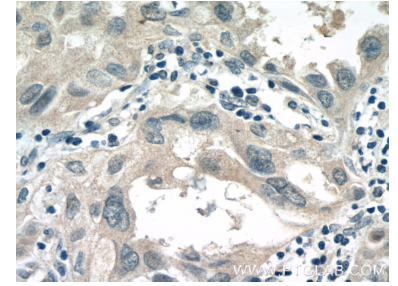
## Selected Validation Data



RAW 264.7 cells were subjected to SDS PAGE followed by western blot with 19446-1-AP (ALDH3B1 Antibody) at dilution of 1:300 incubated at room temperature for 1.5 hours.



Immunohistochemical analysis of paraffin-embedded human lung cancer tissue slide using 19446-1-AP (ALDH3B1 Antibody) at dilution of 1:50 (under 10x lens).



Immunohistochemical analysis of paraffin-embedded human lung cancer tissue slide using 19446-1-AP (ALDH3B1 Antibody) at dilution of 1:50 (under 40x lens).