

For Research Use Only

LRMP Polyclonal antibody

Catalog Number: 19498-1-AP



Basic Information

Catalog Number: 19498-1-AP	GenBank Accession Number: NM_006152	Purification Method: Antigen affinity purification
Size: 150ul , Concentration: 550 µg/ml by Nanodrop and 400 µg/ml by Bradford method using BSA as the standard;	GeneID (NCBI): 4033	Recommended Dilutions: WB 1:500-1:2000 IHC 1:20-1:200 IF 1:10-1:100
Source: Rabbit	Full Name: Lymphoid-restricted membrane protein	
Isotype: IgG	Calculated MW: 62 kDa	
	Observed MW: 70 kDa	

Applications

Tested Applications:

IF, IHC, WB, ELISA

Species Specificity:

human

Note-IHC: suggested antigen retrieval with TE buffer pH 9.0; (*) Alternatively, antigen retrieval may be performed with citrate buffer pH 6.0

Positive Controls:

WB : Raji cells, Jurkat cells

IHC : human spleen tissue,

IF : HepG2 cells,

Background Information

LRMP, also named as JAW1, is a lymphoid restricted integral membrane protein that is localised to the cytoplasmic face of the endoplasmic reticulum.

Storage

Storage:

Store at -20°C. Stable for one year after shipment.

Storage Buffer:

PBS with 0.02% sodium azide and 50% glycerol pH 7.3.

Aliquoting is unnecessary for -20°C storage

***** 20ul sizes contain 0.1% BSA**

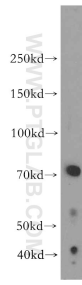
For technical support and original validation data for this product please contact:

T: 1 (888) 4PTGLAB (1-888-478-4522) (toll free in USA), or 1(312) 455-8498 (outside USA)

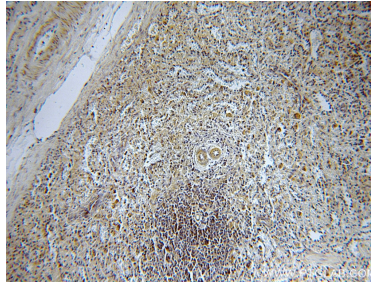
E: proteintech@ptglab.com
W: ptglab.com

This product is exclusively available under Proteintech Group brand and is not available to purchase from any other manufacturer.

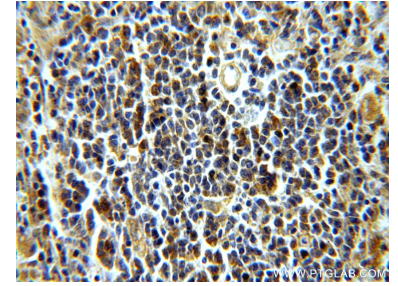
Selected Validation Data



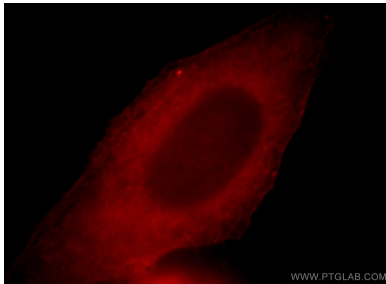
Raji cells were subjected to SDS PAGE followed by western blot with 19498-1-AP (LRMP antibody) at dilution of 1:500 incubated at room temperature for 1.5 hours.



Immunohistochemical analysis of paraffin-embedded human spleen using 19498-1-AP (LRMP antibody) at dilution of 1:100 (under 10x lens).



Immunohistochemical analysis of paraffin-embedded human spleen using 19498-1-AP (LRMP antibody) at dilution of 1:100 (under 40x lens).



Immunofluorescent analysis of HepG2 cells, using LRMP antibody 19498-1-AP at 1:25 dilution and Rhodamine-labeled goat anti-rabbit IgG (red).