

For Research Use Only

# PLA2G10 Polyclonal antibody, PBS Only

Catalog Number: 19502-1-PBS



## Basic Information

**Catalog Number:**

19502-1-PBS

**Size:**

100ug, Concentration: 1 mg/ml by Nanodrop;

**Source:**

Rabbit

**Isotype:**

IgG

**GenBank Accession Number:**

NM\_003561

**GeneID (NCBI):**

8399

**UNIPROT ID:**

O15496

**Full Name:**

phospholipase A2, group X

**Calculated MW:**

18 kDa

**Observed MW:**

18-20 kDa

**Purification Method:**

Antigen affinity purification

## Applications

**Tested Applications:**

WB, Indirect ELISA

**Species Specificity:**

human

## Background Information

PLA2G10 belongs to the phospholipase A2 family. PLA2G10 catalyzes the calcium-dependent hydrolysis of the 2-acyl groups in 3-sn-phosphoglycerides. PLA2G10 has a powerful potency for releasing arachidonic acid from cell membrane phospholipids.

## Storage

**Storage:**

Store at -80°C.

**Storage Buffer:**

PBS only, pH7.3

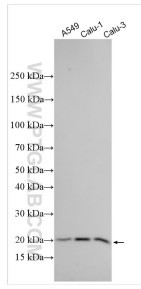
For technical support and original validation data for this product please contact:

T: 1 (888) 4PTGLAB (1-888-478-4522) (toll free in USA), or 1(312) 455-8498 (outside USA)

E: [proteintech@ptglab.com](mailto:proteintech@ptglab.com)  
W: [ptglab.com](http://ptglab.com)

This product is exclusively available under Proteintech Group brand and is not available to purchase from any other manufacturer.

## Selected Validation Data



Various lysates were subjected to SDS PAGE followed by western blot with 19502-1-AP (PLA2G10 antibody) at dilution of 1:1000 incubated at room temperature for 1.5 hours. This data was developed using the same antibody clone with 19502-1-PBS in a different storage buffer formulation.