

For Research Use Only

NPFFR2 Polyclonal antibody

Catalog Number: 19505-1-AP



Basic Information

Catalog Number:

19505-1-AP

Size:

150ul , Concentration: 240 ug/ml by Nanodrop and 147 ug/ml by Bradford method using BSA as the standard;

Source:

Rabbit

Isotype:

IgG

GenBank Accession Number:

NM_053036

GeneID (NCBI):

10886

UNIPROT ID:

Q9Y5X5

Full Name:

neuropeptide FF receptor 2

Calculated MW:

60 kDa

Purification Method:

Antigen affinity purification

Recommended Dilutions:

IHC 1:20-1:200

Applications

Tested Applications:

IHC, ELISA

Species Specificity:

human

Positive Controls:

IHC : human small intestine tissue, human placenta tissue, human testis tissue

Note-IHC: suggested antigen retrieval with TE buffer pH 9.0; (*) Alternatively, antigen retrieval may be performed with citrate buffer pH 6.0

Background Information

NPFFR2, also named as GPR74, NPFF2 and NPGPR, belongs to the G-protein coupled receptor 1 family. NPFFR2 is a receptor for NPAF (A-18-F-amide) and NPFF (F-8-F-amide) neuropeptides which also known as morphine-modulating peptides. NPFFR2 can also be activated by a variety of naturally occurring or synthetic FMRF-amide like ligands. NPFFR2 mediates its action by association with G proteins that activate a phosphatidylinositol-calcium second messenger system. The antibody can recognize isoform1, isoform2 and isoform3 of NPFFR2.

Storage

Storage:

Store at -20°C. Stable for one year after shipment.

Storage Buffer:

PBS with 0.02% sodium azide and 50% glycerol pH 7.3.

Aliquoting is unnecessary for -20°C storage

*** 20ul sizes contain 0.1% BSA

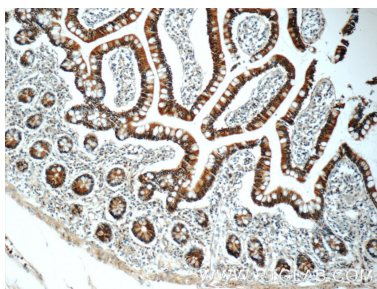
For technical support and original validation data for this product please contact:

T: 1 (888) 4PTGLAB (1-888-478-4522) (toll free in USA), or 1(312) 455-8498 (outside USA)

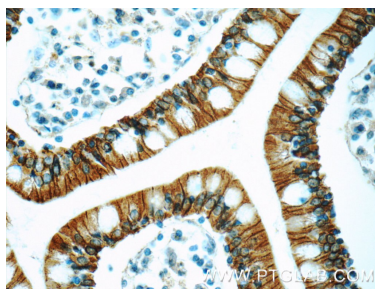
E: proteintech@ptglab.com
W: ptglab.com

This product is exclusively available under Proteintech Group brand and is not available to purchase from any other manufacturer.

Selected Validation Data



Immunohistochemical analysis of paraffin-embedded human small intestine tissue slide using 19505-1-AP (NPFFR2 Antibody) at dilution of 1:50 (under 10x lens).



Immunohistochemical analysis of paraffin-embedded human small intestine tissue slide using 19505-1-AP (NPFFR2 Antibody) at dilution of 1:50 (under 40x lens).