

For Research Use Only

TOR2A Polyclonal antibody

Catalog Number: 19511-1-AP **2 Publications**



Basic Information

Catalog Number: 19511-1-AP	GenBank Accession Number: NM_001085347	Purification Method: Antigen affinity purification
Size: 150ul , Concentration: 133 µg/ml by Nanodrop and 133 µg/ml by Bradford method using BSA as the standard;	GeneID (NCBI): 27433	Recommended Dilutions: WB 1:500-1:1000 IF 1:10-1:100
Source: Rabbit	Full Name: torsin family 2, member A	
Isotype: IgG	Calculated MW: 36 kDa	
	Observed MW: 40-45 kDa	

Applications

Tested Applications: IF, WB, ELISA	Positive Controls: WB : mouse brain tissue, mouse liver tissue IF : HepG2 cells,
Cited Applications: WB	
Species Specificity: human, mouse	
Cited Species: human	

Background Information

TOR2A, also named as TORP1, UNQ6408/PRO21181, HEMBA1005096 and PSEC0218, belongs to the clpA/clpB family and Torsin subfamily. TOR2A contain two peptides Salusin-alpha and Salusin-beta. Salusins -alpha and -beta may be endocrine and/or paracrine factors able to increase intracellular calcium concentrations and induce cell mitogenesis. Salusins may also be potent hypotensive peptides.

Notable Publications

Author	Pubmed ID	Journal	Application
Ming-Xia Zhao	28333148	Cell Death Dis	WB
Yunshang Chen	35115490	Cell Death Dis	WB

Storage

Storage:
Store at -20°C. Stable for one year after shipment.
Storage Buffer:
PBS with 0.02% sodium azide and 50% glycerol pH 7.3.
Aliquoting is unnecessary for -20°C storage

***** 20ul sizes contain 0.1% BSA**

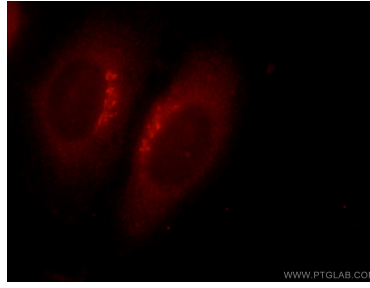
For technical support and original validation data for this product please contact:
T: 1 (888) 4PTGLAB (1-888-478-4522) (toll free in USA), or 1(312) 455-8498 (outside USA)
E: proteintech@ptglab.com
W: ptglab.com

This product is exclusively available under Proteintech Group brand and is not available to purchase from any other manufacturer.

Selected Validation Data



mouse brain tissue were subjected to SDS PAGE followed by western blot with 19511-1-AP (TOR2A antibody) at dilution of 1:100 incubated at room temperature for 1.5 hours.



Immunofluorescent analysis of HepG2 cells using 19511-1-AP (TOR2A antibody) at dilution of 1:25 and Rhodamine-Goat anti-Rabbit IgG.