

PRSS27 Polyclonal antibody

Catalog Number: 19515-1-AP

Basic Information

| | | |
|---|---|--|
| Catalog Number: 19515-1-AP | GenBank Accession Number: NM_031948 | Purification Method: Antigen affinity purification |
| Size: 150ul, Concentration: 350 µg/ml by Nanodrop and 267 µg/ml by Bradford method using BSA as the standard; | GeneID (NCBI): 83886 | Recommended Dilutions: WB 1:500-1:1000 IP 0.5-4.0 ug for 1.0-3.0 mg of total protein lysate IHC 1:50-1:500 |
| Source: Rabbit | Full Name: protease, serine 27 | |
| Isotype: IgG | Calculated MW: 32 kDa | |
| | Observed MW: 28 kDa | |

Applications

| | |
|---|--|
| Tested Applications: IHC, IP, WB, ELISA | Positive Controls: |
| Species Specificity: human, mouse | WB: SW 1990 cells, |
| Note-IHC: suggested antigen retrieval with TE buffer pH 9.0; (*) Alternatively, antigen retrieval may be performed with citrate buffer pH 6.0 | IP: SW 1990 cells, |
| | IHC: human pancreas tissue, human oesophagus cancer tissue, mouse pancreas tissue |

Background Information

PRSS27, also named as CAPH2, MPN, belongs to the peptidase S1 family. The trypsin-like serine protease marapsin (Prss27) is a member of the large protease gene cluster at human chromosome 16p13.3. The Prss27 gene is expressed by a variety of human, mouse, and opossum tissues. In humans and mice, it is especially abundant in stratified squamous epithelia of cornea, larynx, esophagus, and cervix and is induced in wounded and psoriatic skin (PMID: 23447538). Prss27 expression was restricted to tissues containing stratified squamous epithelia and was absent or only weakly expressed in all other tissues, including the pancreas.

Storage

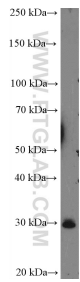
Storage:
Store at -20°C. Stable for one year after shipment.
Storage Buffer:
PBS with 0.02% sodium azide and 50% glycerol pH 7.3.
Aliquoting is unnecessary for -20°C storage

*** 20ul sizes contain 0.1% BSA

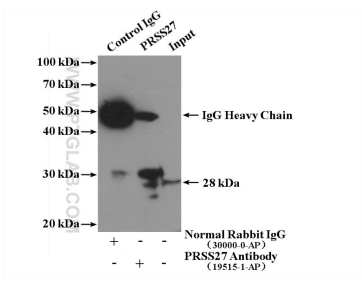
For technical support and original validation data for this product please contact:
T: 1 (888) 4PTGLAB (1-888-478-4522) (toll free in USA), or 1(312) 455-8498 (outside USA)
E: proteintech@ptglab.com
W: ptglab.com

This product is exclusively available under Proteintech Group brand and is not available to purchase from any other manufacturer.

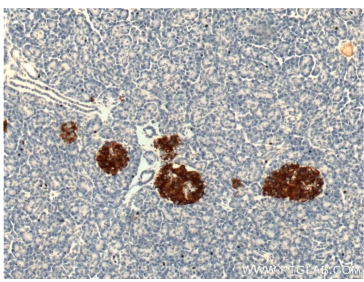
Selected Validation Data



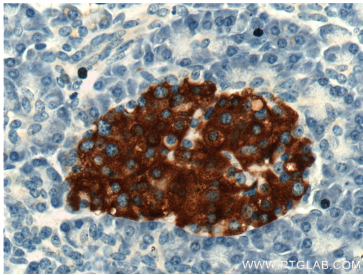
SW 1990 cells were subjected to SDS PAGE followed by western blot with 19515-1-AP (PRSS27 Antibody) at dilution of 1:600 incubated at room temperature for 1.5 hours.



IP Result of anti-PRSS27 (IP:19515-1-AP, 4ug; Detection:19515-1-AP 1:300) with SW 1990 cells lysate 2960ug.



Immunohistochemical analysis of paraffin-embedded human pancreas tissue slide using 19515-1-AP (PRSS27 Antibody) at dilution of 1:200 (under 10x lens).



Immunohistochemical analysis of paraffin-embedded human pancreas tissue slide using 19515-1-AP (PRSS27 Antibody) at dilution of 1:200 (under 40x lens).