

For Research Use Only

CES7-Specific Polyclonal antibody

Catalog Number: 19520-1-AP



Basic Information

Catalog Number:

19520-1-AP

Size:

150ul , Concentration: 800 ug/ml by Nanodrop and 460 ug/ml by Bradford method using BSA as the standard;

Source:

Rabbit

Isotype:

IgG

GenBank Accession Number:

NM_145024

GeneID (NCBI):

221223

UNIPROT ID:

Q6NT32

Full Name:

carboxylesterase 7

Calculated MW:

64 kDa

Observed MW:

58-60 kDa

Purification Method:

Antigen affinity purification

Recommended Dilutions:

WB 1:200-1:1000

IF/ICC 1:20-1:200

Applications

Tested Applications:

WB, IF/ICC, ELISA

Species Specificity:

human

Positive Controls:

WB : HepG2 cells,

IF/ICC : HepG2 cells,

Background Information

CES7, also named as CAUXIN, CES4C1, CES5 and FLJ31547, belongs to the type-B carboxylesterase/lipase family. CES7 is involved in the detoxification of xenobiotics and in the activation of ester and amide prodrugs. CES7 catalyze the reaction: A carboxylic ester + H₂O = an alcohol + a carboxylate. The antibody can recognize the isoform1 and isoform2.

Storage

Storage:

Store at -20°C. Stable for one year after shipment.

Storage Buffer:

PBS with 0.02% sodium azide and 50% glycerol pH 7.3.

Aliquoting is unnecessary for -20°C storage

*** 20ul sizes contain 0.1% BSA

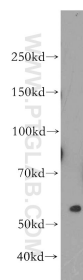
For technical support and original validation data for this product please contact:

T: 1 (888) 4PTGLAB (1-888-478-4522) (toll free in USA), or 1(312) 455-8498 (outside USA)

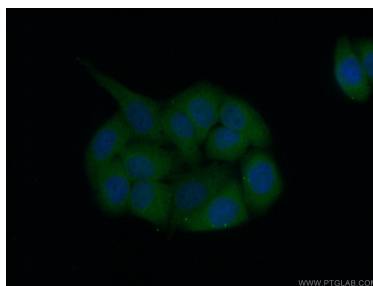
E: proteintech@ptglab.com
W: ptglab.com

This product is exclusively available under Proteintech Group brand and is not available to purchase from any other manufacturer.

Selected Validation Data



HepG2 cells were subjected to SDS PAGE followed by western blot with 19520-1-AP (CES7-Specific antibody) at dilution of 1:300 incubated at room temperature for 1.5 hours.



Immunofluorescent analysis of (10% Formaldehyde) fixed HepG2 cells using 19520-1-AP (CES7-Specific antibody) at dilution of 1:50 and Alexa Fluor 488-conjugated Goat Anti-Rabbit IgG(H+L).