

For Research Use Only

NY-ESO-1 Polyclonal antibody

Catalog Number: 19521-1-AP **2 Publications**



Basic Information

Catalog Number: 19521-1-AP	GenBank Accession Number: NM_139250	Purification Method: Antigen affinity purification
Size: 150ul , Concentration: 300 µg/ml by Nanodrop and 240 µg/ml by Bradford method using BSA as the standard;	GeneID (NCBI): 246100	Recommended Dilutions: WB 1:200-1:1000 IP 0.5-4.0 ug for IP and 1:500-1:1000 for WB
Source: Rabbit	Full Name: cancer/testis antigen 1A	IHC 1:50-1:500 IF 1:10-1:100
Isotype: IgG	Calculated MW: 18 kDa	
	Observed MW: 16-25 kDa	

Applications

Tested Applications:
IF, IHC, IP, WB, ELISA

Cited Applications:
WB

Species Specificity:
human, mouse

Cited Species:
human

Note-IHC: suggested antigen retrieval with TE buffer pH 9.0; (*) Alternatively, antigen retrieval may be performed with citrate buffer pH 6.0

Positive Controls:

WB : human testis tissue, HT-1080 cells, NCI-H1299 cells

IP : HepG2 cells,

IHC : mouse testis tissue,

IF : HepG2 cells,

Background Information

CTAG1A, also named as NY-ESO-1, CTAG, CTAG1, ESO1, LAGE2, LAGE2A, CTAG1B, LAGE2B and CT6.1, belongs to the CTAG family.

Notable Publications

Author	Pubmed ID	Journal	Application
Jiang Liu	35122000	Nat Cancer	WB
Liyan Lao	36603133	Cancer Immunol Res	WB

Storage

Storage:

Store at -20°C. Stable for one year after shipment.

Storage Buffer:

PBS with 0.02% sodium azide and 50% glycerol pH 7.3.

Aliquoting is unnecessary for -20°C storage

*** 20ul sizes contain 0.1% BSA

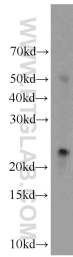
For technical support and original validation data for this product please contact:

T: 1 (888) 4PTGLAB (1-888-478-4522) (toll free in USA), or 1(312) 455-8498 (outside USA)

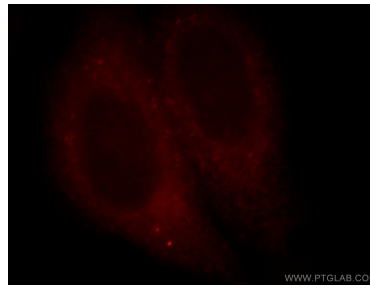
E: proteintech@ptglab.com
W: ptglab.com

This product is exclusively available under Proteintech Group brand and is not available to purchase from any other manufacturer.

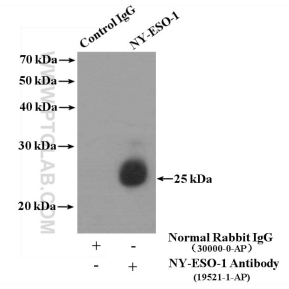
Selected Validation Data



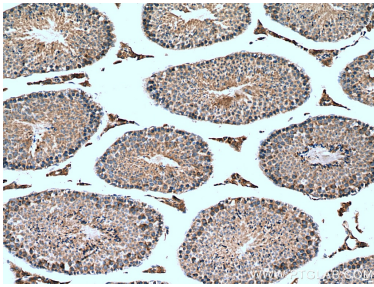
human testis tissue were subjected to SDS PAGE followed by western blot with 19521-1-AP (CTAG1A antibody) at dilution of 1:100 incubated at room temperature for 1.5 hours.



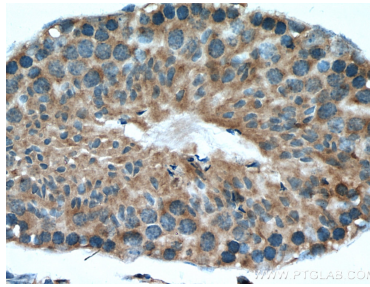
Immunofluorescent analysis of HepG2 cells, using CTAG1A antibody 19521-1-AP at 1:25 dilution and Rhodamine-labeled goat anti-rabbit IgG (red).



IP Result of anti-NY-ESO-1 (IP:19521-1-AP, 4ug; Detection:19521-1-AP 1:500) with HepG2 cells lysate 3200ug.



Immunohistochemical analysis of paraffin-embedded mouse testis tissue slide using 19521-1-AP (NY-ESO-1 antibody) at dilution of 1:200 (under 10x lens). Heat mediated antigen retrieval with Tris-EDTA buffer (pH 9.0).



Immunohistochemical analysis of paraffin-embedded mouse testis tissue slide using 19521-1-AP (NY-ESO-1 antibody) at dilution of 1:200 (under 40x lens). Heat mediated antigen retrieval with Tris-EDTA buffer (pH 9.0).