

For Research Use Only

NY-ESO-1 Polyclonal antibody, PBS Only

Catalog Number: 19521-1-PBS



Basic Information

Catalog Number:

19521-1-PBS

Size:

100ug, Concentration: 1 mg/ml by Nanodrop;

Source:

Rabbit

Isotype:

IgG

GenBank Accession Number:

NM_139250

GeneID (NCBI):

246100

UNIPROT ID:

P78358

Full Name:

cancer/testis antigen 1A

Calculated MW:

18 kDa

Observed MW:

16-25 kDa

Purification Method:

Antigen affinity purification

Applications

Tested Applications:

WB, IHC, IP, Indirect ELISA

Species Specificity:

human

Background Information

CTAG1A, also named as NY-ESO-1, CTAG, CTAG1, ESO1, LAGE2, LAGE2A, CTAG1B, LAGE2B and CT6.1, belongs to the CTAG family.

Storage

Storage:

Store at -80°C.

Storage Buffer:

PBS only, pH7.3

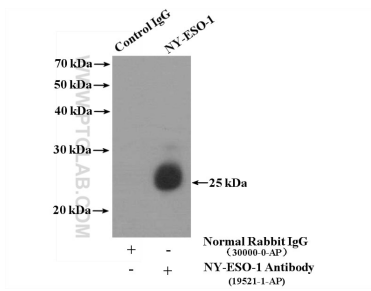
For technical support and original validation data for this product please contact:

T: 1 (888) 4PTGLAB (1-888-478-4522) (toll free in USA), or 1(312) 455-8498 (outside USA)

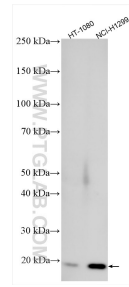
E: proteintech@ptglab.com
W: ptglab.com

This product is exclusively available under Proteintech Group brand and is not available to purchase from any other manufacturer.

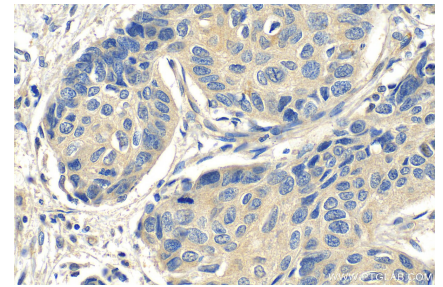
Selected Validation Data



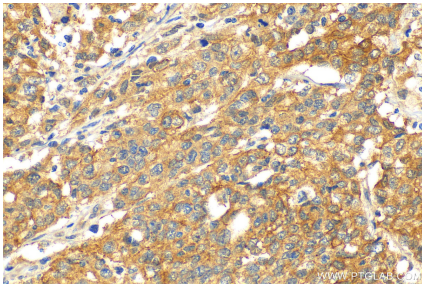
IP result of anti-NY-ESO-1 (IP:19521-1-AP, 4ug; Detection:19521-1-AP 1:500) with HepG2 cells lysate 3200ug. This data was developed using the same antibody clone with 19521-1-PBS in a different storage buffer formulation.



Various lysates were subjected to SDS PAGE followed by western blot with 19521-1-AP (NY-ESO-1 antibody) at dilution of 1:500 incubated at room temperature for 1.5 hours. This data was developed using the same antibody clone with 19521-1-PBS in a different storage buffer formulation.



Immunohistochemical analysis of paraffin-embedded human lung cancer tissue slide using 19521-1-AP (NY-ESO-1 antibody) at dilution of 1:200 (under 40x lens). Heat mediated antigen retrieval with Tris-EDTA buffer (pH 9.0). This data was developed using the same antibody clone with 19521-1-PBS in a different storage buffer formulation.



Immunohistochemical analysis of paraffin-embedded human stomach cancer tissue slide using 19521-1-AP (NY-ESO-1 antibody) at dilution of 1:200 (under 40x lens). Heat mediated antigen retrieval with Tris-EDTA buffer (pH 9.0). This data was developed using the same antibody clone with 19521-1-PBS in a different storage buffer formulation.