

For Research Use Only

AFMID Polyclonal antibody

Catalog Number: 19522-1-AP

Featured Product

3 Publications



Basic Information

| | | |
|--|--|--|
| Catalog Number: 19522-1-AP | GenBank Accession Number: NM_001145526 | Purification Method: Antigen affinity purification |
| Size: 150ul , Concentration: 300 µg/ml by Nanodrop and 247 µg/ml by Bradford method using BSA as the standard; | GeneID (NCBI): 125061 | Recommended Dilutions: WB 1:500-1:2000 IHC 1:50-1:500 |
| Source: Rabbit | Full Name: arylformamidase | |
| Isotype: IgG | Calculated MW: 35 kDa | |
| | Observed MW: 30 kDa | |

Applications

| | |
|--|--|
| Tested Applications: IHC, WB, ELISA | Positive Controls: |
| Cited Applications: WB | WB : mouse kidney tissue, mouse liver tissue, human liver tissue |
| Species Specificity: human, mouse | IHC : human liver tissue, |
| Cited Species: human, mouse | |
| Note-IHC: suggested antigen retrieval with TE buffer pH 9.0; (*) Alternatively, antigen retrieval may be performed with citrate buffer pH 6.0 | |

Background Information

AFMID, also named as KF, belongs to the AFMID family. AFMID catalyzes the hydrolysis of N-formyl-L-kynurenine to L-kynurenine, the second step in the conversion of tryptophan to nicotinic acid, NAD(H) and NADP(H). AFMID is required for elimination of toxic metabolites.

Notable Publications

| Author | Pubmed ID | Journal | Application |
|-------------------|-----------|---------------------|-------------|
| Kuan-Ting Lin | 29449409 | Genome Res | WB |
| Morten Dall | 29408602 | Mol Cell Endocrinol | WB |
| Krishna S Tummala | 25453901 | Cancer Cell | WB |

Storage

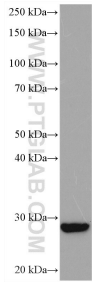
Storage:
Store at -20°C. Stable for one year after shipment.
Storage Buffer:
PBS with 0.02% sodium azide and 50% glycerol pH 7.3.
Aliquoting is unnecessary for -20°C storage

*** 20ul sizes contain 0.1% BSA

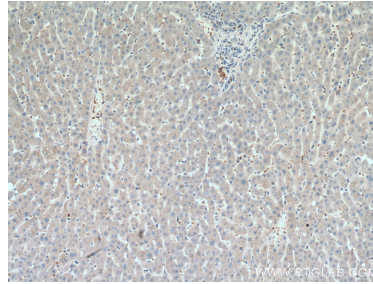
For technical support and original validation data for this product please contact:
T: 1 (888) 4PTGLAB (1-888-478-4522) (toll free in USA), or 1(312) 455-8498 (outside USA)
E: proteintech@ptglab.com
W: ptglab.com

This product is exclusively available under Proteintech Group brand and is not available to purchase from any other manufacturer.

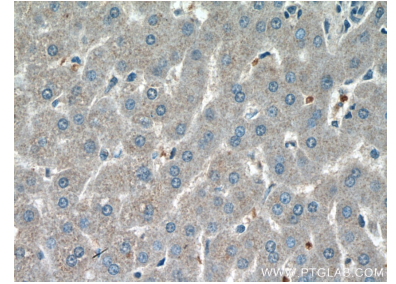
Selected Validation Data



mouse kidney tissue were subjected to SDS PAGE followed by western blot with 19522-1-AP (AFMID antibody) at dilution of 1:1000 incubated at room temperature for 1.5 hours.



Immunohistochemical analysis of paraffin-embedded human liver tissue slide using 19522-1-AP (AFMID antibody) at dilution of 1:100 (under 10x lens).



Immunohistochemical analysis of paraffin-embedded human liver tissue slide using 19522-1-AP (AFMID antibody) at dilution of 1:100 (under 40x lens).