

For Research Use Only

MSMP Polyclonal antibody

Catalog Number: 19526-1-AP

Featured Product



Basic Information

Catalog Number:

19526-1-AP

Size:

150ul, Concentration: 300 ug/ml by Nanodrop;

Source:

Rabbit

Isotype:

IgG

GenBank Accession Number:

NM_001044264

GeneID (NCBI):

692094

UNIPROT ID:

Q1L6U9

Full Name:

microseminoprotein, prostate associated

Calculated MW:

15 kDa

Observed MW:

12 kDa, 20 kDa

Purification Method:

Antigen affinity purification

Recommended Dilutions:

WB 1:500-1:1000

IF/ICC 1:50-1:500

Applications

Tested Applications:

WB, IF/ICC, ELISA

Species Specificity:

human, mouse, rat

Positive Controls:

WB : PC-3 cells, DU 145 cells

IF/ICC : PC-3 cells,

Background Information

MSMP, also named PSMP, belongs to the beta-microseminoprotein family. MSMP is highly conserved, sharing 91 to 94% amino acid identity with its rodent and dog homologs. RT-PCR of 27 human tissues detected PSMP expression only in trachea and, to a lesser extent, testis. MSMP was highly expressed in PC3 cells, but not in 2 other prostate cancer cell lines. Western blot analysis revealed 20 kDa and 12 kDa bands PSMP maybe due to posttranslational modification.

Storage

Storage:

Store at -20°C. Stable for one year after shipment.

Storage Buffer:

PBS with 0.02% sodium azide and 50% glycerol pH 7.3.

Aliquoting is unnecessary for -20°C storage

*** 20ul sizes contain 0.1% BSA

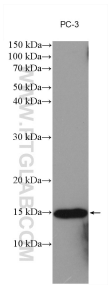
For technical support and original validation data for this product please contact:

T: 1 (888) 4PTGLAB (1-888-478-4522) (toll free in USA), or 1(312) 455-8498 (outside USA)

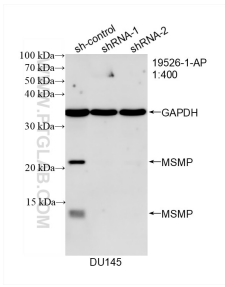
E: proteintech@ptglab.com
W: ptglab.com

This product is exclusively available under Proteintech Group brand and is not available to purchase from any other manufacturer.

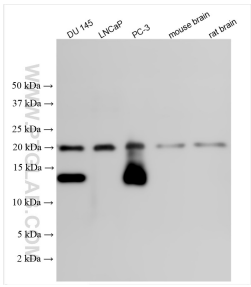
Selected Validation Data



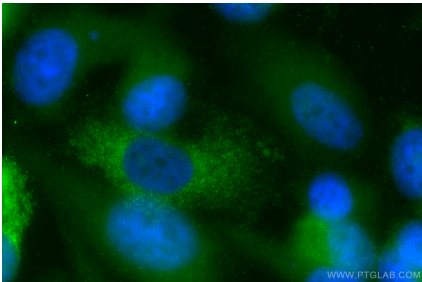
PC-3 cells were subjected to SDS PAGE followed by western blot with 19526-1-AP (MSMP antibody) at dilution of 1:500 incubated at room temperature for 1.5 hours.



WB result of MSMP antibody (19526-1-AP; 1:400; incubated at room temperature for 1.5 hours) with sh-Control and sh-MSMP transfected DU 145 cells.



Various lysates were subjected to SDS PAGE followed by western blot with 19526-1-AP (MSMP antibody) at dilution of 1:500 incubated at room temperature for 1.5 hours.



Immunofluorescent analysis of (-20°C Methanol) fixed PC-3 cells using MSMP antibody (19526-1-AP) at dilution of 1:200 and CoraLite®488-Conjugated AffiniPure Goat Anti-Rabbit IgG(H+L).