

For Research Use Only

SEN5-Specific Polyclonal antibody, PBS Only

Catalog Number: 19529-1-PBS

Featured Product



Basic Information

Catalog Number:

19529-1-PBS

Size:

100ug, Concentration: 1 mg/ml by
Nanodrop;

Source:

Rabbit

Isotype:

IgG

GenBank Accession Number:

NM_152699

GeneID (NCBI):

205564

UNIPROT ID:

Q96HI0

Full Name:

SUMO1/sentrin specific peptidase 5

Calculated MW:

87 kDa

Observed MW:

97 kDa

Purification Method:

Antigen affinity purification

Applications

Tested Applications:

IHC, IP, Indirect ELISA

Species Specificity:

human, mouse, rat

Background Information

SEN5, also named as FKSG45, belongs to the peptidase C48 family. SEN5 is a protease that catalyzes two essential functions in the SUMO pathway: processing of full-length SUMO3 to its mature form and deconjugation of SUMO2 and SUMO3 from targeted proteins. SEN5 has weak proteolytic activity against full-length SUMO1 or SUMO1 conjugates. It is required for cell division. The antibody is specific to SEN5.

Storage

Storage:

Store at -80°C.

Storage Buffer:

PBS Only

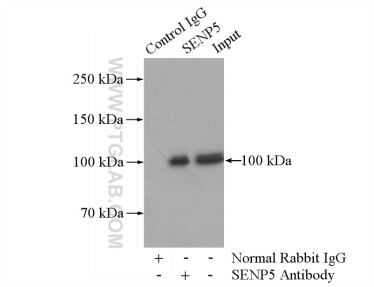
For technical support and original validation data for this product please contact:

T: 1 (888) 4PTGLAB (1-888-478-4522) (toll free
in USA), or 1(312) 455-8498 (outside USA)

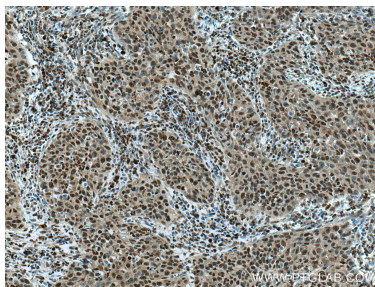
E: proteintech@ptglab.com
W: ptglab.com

This product is exclusively available under Proteintech Group brand and is not available to purchase from any other manufacturer.

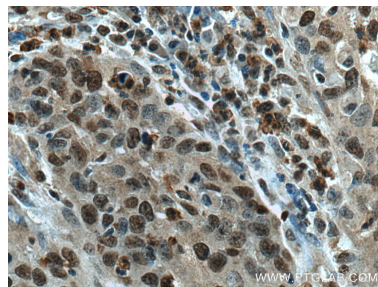
Selected Validation Data



IP result of anti-SEN5-Specific (IP:19529-1-AP, 4ug; Detection:19529-1-AP 1:300) with HeLa cells lysate 520ug. This data was developed using the same antibody clone with 19529-1-PBS in a different storage buffer formulation.



Immunohistochemical analysis of paraffin-embedded human cervical cancer tissue slide using 19529-1-AP (SEN5-Specific antibody) at dilution of 1:200 (under 10x lens). Heat mediated antigen retrieval with Tris-EDTA buffer (pH 9.0). This data was developed using the same antibody clone with 19529-1-PBS in a different storage buffer formulation.



Immunohistochemical analysis of paraffin-embedded human cervical cancer tissue slide using 19529-1-AP (SEN5-Specific antibody) at dilution of 1:200 (under 40x lens). Heat mediated antigen retrieval with Tris-EDTA buffer (pH 9.0). This data was developed using the same antibody clone with 19529-1-PBS in a different storage buffer formulation.