

For Research Use Only

# SPIN1-Specific Polyclonal antibody

Catalog Number: 19531-1-AP

Featured Product

5 Publications



## Basic Information

### Catalog Number:

19531-1-AP

### Size:

150ul, Concentration: 700 ug/ml by Nanodrop and 327 ug/ml by Bradford method using BSA as the standard;

### Source:

Rabbit

### Isotype:

IgG

### GenBank Accession Number:

NM\_006717

### GeneID (NCBI):

10927

### UNIPROT ID:

Q9Y657

### Full Name:

spindlin 1

### Calculated MW:

30 kDa

### Observed MW:

30 kDa

### Purification Method:

Antigen affinity purification

### Recommended Dilutions:

WB 1:500-1:2000

IHC 1:20-1:200

## Applications

### Tested Applications:

WB, IHC, IF/ICC, ELISA

### Cited Applications:

WB, IHC

### Species Specificity:

human

### Cited Species:

human

**Note-IHC: suggested antigen retrieval with TE buffer pH 9.0; (\*) Alternatively, antigen retrieval may be performed with citrate buffer pH 6.0**

### Positive Controls:

WB : SKOV-3 cells, A2780 cells, HEK-293 cells

IHC : human ovary tumor tissue,

## Background Information

SPIN1 (Spindlin 1) is a histone methylation reader, which recognizes trimethylated histone H3 lysine 4 through the protein-protein interaction. SPIN1 was initially found in ovarian cancer via searching ovarian cancer-related genes. It is overexpressed in ovarian cancer tissue, which exhibits a high homology to mouse Spin (Spindlin) gene. Signaling pathways responsible for SPIN1 functions include PI3K/Akt, Wnt and RET that are highly relevant to tumorigenesis. (PMID: 34492335, PMID: 31790762)

## Notable Publications

Author	Pubmed ID	Journal	Application
Ling Zhou	34753384	Bioengineered	IHC
Xu Chen	29743122	J Exp Clin Cancer Res	IHC
Min Zhong	39548064	Cell Death Dis	IHC

## Storage

### Storage:

Store at -20°C. Stable for one year after shipment.

### Storage Buffer:

PBS with 0.02% sodium azide and 50% glycerol, pH7.3

Aliquoting is unnecessary for -20°C storage

\*\*\* 20ul sizes contain 0.1% BSA

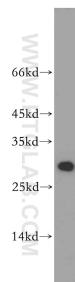
For technical support and original validation data for this product please contact:

T: 1 (888) 4PTGLAB (1-888-478-4522) (toll free in USA), or 1(312) 455-8498 (outside USA)

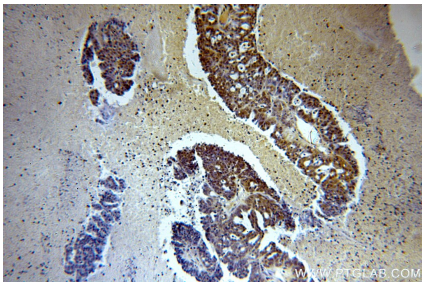
E: [proteintech@ptglab.com](mailto:proteintech@ptglab.com)  
W: [ptglab.com](http://ptglab.com)

This product is exclusively available under Proteintech Group brand and is not available to purchase from any other manufacturer.

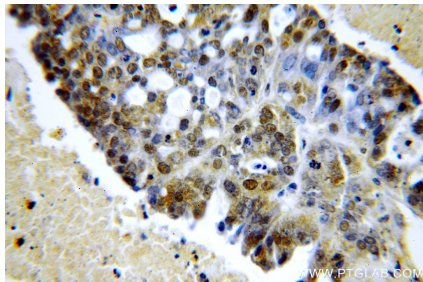
Selected Validation Data



SKOV-3 cells were subjected to SDS PAGE followed by western blot with 19531-1-AP (SPIN1-Specific antibody) at dilution of 1:500 incubated at room temperature for 1.5 hours.



Immunohistochemical analysis of paraffin-embedded human ovary tumor using 19531-1-AP (SPIN1-Specific antibody) at dilution of 1:100 (under 10x lens).



Immunohistochemical analysis of paraffin-embedded human ovary tumor using 19531-1-AP (SPIN1-Specific antibody) at dilution of 1:100 (under 40x lens).