

For Research Use Only

# CHKA-Specific Polyclonal antibody

Catalog Number: 19537-1-AP



## Basic Information

<b>Catalog Number:</b> 19537-1-AP	<b>GenBank Accession Number:</b> NM_001277	<b>Purification Method:</b> Antigen affinity purification
<b>Size:</b> 150ul , Concentration: 450 µg/ml by Nanodrop and 273 µg/ml by Bradford method using BSA as the standard;	<b>GeneID (NCBI):</b> 1119	<b>Recommended Dilutions:</b> WB 1:200-1:1000 IHC 1:20-1:200 IF 1:10-1:100
<b>Source:</b> Rabbit	<b>Full Name:</b> choline kinase alpha	
<b>Isotype:</b> IgG	<b>Calculated MW:</b> 52 kDa	
	<b>Observed MW:</b> 50 kDa	

## Applications

### Tested Applications:

IF, IHC, WB, ELISA

### Species Specificity:

human, mouse, rat

**Note-IHC: suggested antigen retrieval with TE buffer pH 9.0; (\*) Alternatively, antigen retrieval may be performed with citrate buffer pH 6.0**

### Positive Controls:

**WB :** HepG2 cells, COLO 320 cells, human testis tissue, mouse colon tissue, mouse testis tissue, Raji cells

**IHC :** human breast cancer tissue, human liver tissue

**IF :** HepG2 cells,

## Background Information

Choline kinase alpha, also named as CHK, CKI and CK, belongs to the choline/ethanolamine kinase family. CHKA may have a regulatory role in phosphatidylcholine synthesis. CHKA catalyze the reaction: ATP + choline = ADP + O-phosphocholine. The human enzyme resembled the rat liver enzyme over the entire sequence. It also resembled the yeast enzyme in the carboxy-terminal region, but not in the amino-terminal region (PMID:1618328). And it expresses in human brain tissue but not in human skeletal muscle (PMID:21665002). It has 2 isoforms produced by alternative splicing. The antibody is specific to CHKA.

## Storage

### Storage:

Store at -20°C. Stable for one year after shipment.

### Storage Buffer:

PBS with 0.02% sodium azide and 50% glycerol pH 7.3.

Aliquoting is unnecessary for -20°C storage

**\*\*\* 20ul sizes contain 0.1% BSA**

For technical support and original validation data for this product please contact:

T: 1 (888) 4PTGLAB (1-888-478-4522) (toll free in USA), or 1(312) 455-8498 (outside USA)

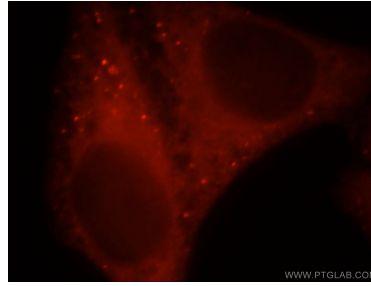
E: proteintech@ptglab.com  
W: ptglab.com

**This product is exclusively available under Proteintech Group brand and is not available to purchase from any other manufacturer.**

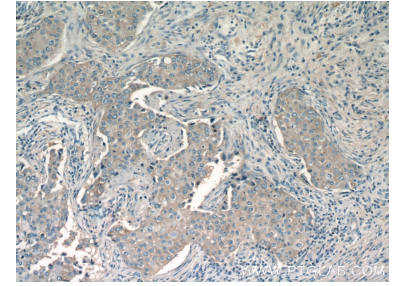
## Selected Validation Data



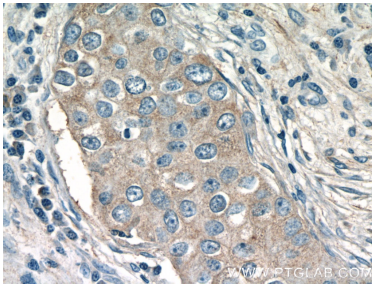
HepG2 cells were subjected to SDS PAGE followed by western blot with 19537-1-AP (CHKA-Specific antibody) at dilution of 1:300 incubated at room temperature for 1.5 hours.



Immunofluorescent analysis of HepG2 cells, using CHKA antibody 19537-1-AP at 1:25 dilution and Rhodamine-labeled goat anti-rabbit IgG (red).



Immunohistochemical analysis of paraffin-embedded human breast cancer tissue slide using 19537-1-AP (CHKA-Specific Antibody) at dilution of 1:50 (under 10x lens).



Immunohistochemical analysis of paraffin-embedded human breast cancer tissue slide using 19537-1-AP (CHKA-Specific Antibody) at dilution of 1:50 (under 40x lens).