

For Research Use Only

LPIN2 Polyclonal antibody

Catalog Number: 19545-1-AP



Basic Information

Catalog Number: 19545-1-AP	GenBank Accession Number: NM_014646	Purification Method: Antigen affinity purification
Size: 150ul , Concentration: 180 µg/ml by Bradford method using BSA as the standard;	GeneID (NCBI): 9663	Recommended Dilutions: WB 1:500-1:2000
Source: Rabbit	Full Name: lipin 2	
Isotype: IgG	Calculated MW: 99 kDa	
	Observed MW: 99 kDa	

Applications

Tested Applications: WB,ELISA	Positive Controls: WB : HT-1080 cells, human liver tissue
Species Specificity: human	

Background Information

Lipin 2, also named as KIAA0249, belongs to the lipin family. Defects in LPIN2 are the cause of Majeed syndrome ajeed syndrome which is an autosomal recessive disorder combining features of chronic recurrent multifocal osteomyelitis.

Storage

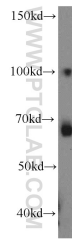
Storage:
Store at -20°C. Stable for one year after shipment.
Storage Buffer:
PBS with 0.02% sodium azide and 50% glycerol pH 7.3.
Aliquoting is unnecessary for -20°C storage

*** 20ul sizes contain 0.1% BSA

For technical support and original validation data for this product please contact:
T: 1 (888) 4PTGLAB (1-888-478-4522) (toll free in USA), or 1(312) 455-8498 (outside USA) E: proteintech@ptglab.com W: ptglab.com

This product is exclusively available under Proteintech Group brand and is not available to purchase from any other manufacturer.

Selected Validation Data



HT-1080 cells were subjected to SDS PAGE followed by western blot with 19545-1-AP (LPIN2 antibody) at dilution of 1:300 incubated at room temperature for 1.5 hours.