

For Research Use Only

Myoferlin Polyclonal antibody

Catalog Number: 19548-1-AP **2 Publications**



Basic Information

Catalog Number: 19548-1-AP	GenBank Accession Number: NM_133337	Purification Method: Antigen affinity purification
Size: 150ul , Concentration: 450 µg/ml by Nanodrop and 260 µg/ml by Bradford method using BSA as the standard;	GeneID (NCBI): 26509	Recommended Dilutions: WB 1:1000-1:4000 IHC 1:50-1:500 IF 1:10-1:100
Source: Rabbit	Full Name: myoferlin	
Isotype: IgG	Calculated MW: 235 kDa	
	Observed MW: 235-250 kDa	

Applications

Tested Applications:
FC, IF, IHC, WB, ELISA

Cited Applications:
WB

Species Specificity:
human

Cited Species:
human

Note-IHC: suggested antigen retrieval with TE buffer pH 9.0; (*) Alternatively, antigen retrieval may be performed with citrate buffer pH 6.0

Positive Controls:

WB: A549 cells, human placenta tissue, HeLa cells

IHC: human placenta tissue,

IF: HeLa cells,

Background Information

MYOF, also named as FER1L3 and KIAA1207, belongs to the ferlin family. MYOF is a calcium/phospholipid-binding protein that plays a role in the plasmalemma repair mechanism of endothelial cells that permits rapid resealing of membranes disrupted by mechanical stress. It is involved in endocytic recycling. MYOF is implicated in VEGF signal transduction by regulating the levels of the receptor KDR. The antibody can recognize all the 8 isoforms of MYOF.

Notable Publications

Author	Pubmed ID	Journal	Application
Yanqing Zhou	27432471	J Proteomics	WB
Xuwen Chen	38232462	Eur J Med Chem	WB

Storage

Storage:

Store at -20°C. Stable for one year after shipment.

Storage Buffer:

PBS with 0.02% sodium azide and 50% glycerol pH 7.3.

Aliquoting is unnecessary for -20°C storage

*** 20ul sizes contain 0.1% BSA

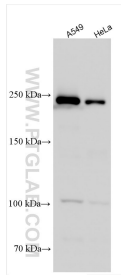
For technical support and original validation data for this product please contact:

T: 1 (888) 4PTGLAB (1-888-478-4522) (toll free in USA), or 1(312) 455-8498 (outside USA)

E: proteintech@ptglab.com
W: ptglab.com

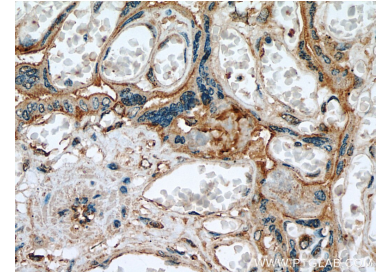
This product is exclusively available under Proteintech Group brand and is not available to purchase from any other manufacturer.

Selected Validation Data

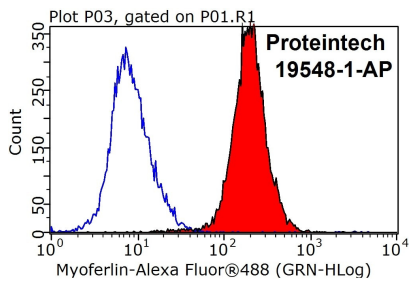


Various lysates were subjected to SDS PAGE followed by western blot with 19548-1-AP (Myoferlin antibody) at dilution of 1:2000 incubated at room temperature for 1.5 hours.

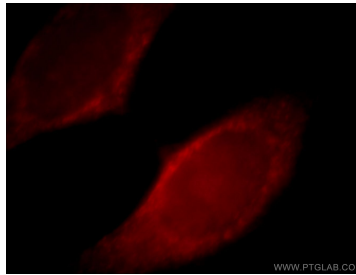
Immunohistochemical analysis of paraffin-embedded human placenta tissue slide using 19548-1-AP (Myoferlin antibody) at dilution of 1:200 (under 10x lens). Heat mediated antigen retrieval with Tris-EDTA buffer (pH 9.0).



Immunohistochemical analysis of paraffin-embedded human placenta tissue slide using 19548-1-AP (Myoferlin antibody) at dilution of 1:200 (under 40x lens). Heat mediated antigen retrieval with Tris-EDTA buffer (pH 9.0).



1X10⁶ HeLa cells were stained with 0.2ug Myoferlin antibody (19548-1-AP, red) and control antibody (blue). Fixed with 90% MeOH blocked with 3% BSA (30 min). Alexa Fluor 488-conjugated AffiniPure Goat Anti-Rabbit IgG(H+L) with dilution 1:1000.



Immunofluorescent analysis of HeLa cells, using MYOF antibody 19548-1-AP at 1:25 dilution and Rhodamine-labeled goat anti-rabbit IgG (red).