

For Research Use Only

KIF19 Polyclonal antibody

Catalog Number: 19551-1-AP

2 Publications



Basic Information

Catalog Number:

19551-1-AP

Size:

150ul, Concentration: 1000 ug/ml by Nanodrop and 573 ug/ml by Bradford method using BSA as the standard;

Source:

Rabbit

Isotype:

IgG

GenBank Accession Number:

NM_153209

GeneID (NCBI):

124602

UNIPROT ID:

Q2TAC6

Full Name:

kinesin family member 19

Calculated MW:

111 kDa

Observed MW:

92 kDa

Purification Method:

Antigen affinity purification

Recommended Dilutions:

WB 1:500-1:1000

IHC 1:20-1:200

IF/ICC 1:10-1:100

Applications

Tested Applications:

WB, IHC, IF/ICC, ELISA

Cited Applications:

WB, IP, IF

Species Specificity:

human, mouse

Cited Species:

human, mouse

Note-IHC: suggested antigen retrieval with TE buffer pH 9.0; (*) Alternatively, antigen retrieval may be performed with citrate buffer pH 6.0

Positive Controls:

WB : human brain tissue,

IHC : human brain tissue,

IF/ICC : HepG2 cells,

Background Information

KIF19 belongs to the kinesin-like protein family. The antibody recognizes isoform1 of KIF19 only.

Notable Publications

Author	Pubmed ID	Journal	Application
Kavisha Arora	32683324	J Biol Chem	WB,IF,IP
Zhang Yong Y	21149239	J Mol Cell Biol	WB

Storage

Storage:

Store at -20°C. Stable for one year after shipment.

Storage Buffer:

PBS with 0.02% sodium azide and 50% glycerol pH 7.3.

Aliquoting is unnecessary for -20°C storage

*** 20ul sizes contain 0.1% BSA

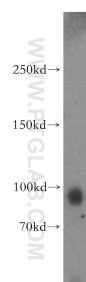
For technical support and original validation data for this product please contact:

T: 1 (888) 4PTGLAB (1-888-478-4522) (toll free in USA), or 1(312) 455-8498 (outside USA)

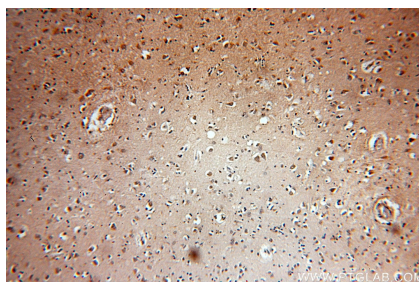
E: proteintech@ptglab.com
W: ptglab.com

This product is exclusively available under Proteintech Group brand and is not available to purchase from any other manufacturer.

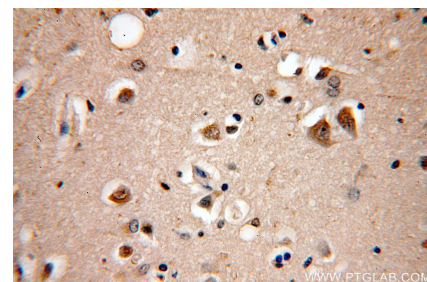
Selected Validation Data



human brain tissue were subjected to SDS PAGE followed by western blot with 19551-1-AP (KIF19 antibody) at dilution of 1:300 incubated at room temperature for 1.5 hours.



Immunohistochemical analysis of paraffin-embedded human brain using 19551-1-AP (KIF19 antibody) at dilution of 1:50 (under 10x lens).



Immunohistochemical analysis of paraffin-embedded human brain using 19551-1-AP (KIF19 antibody) at dilution of 1:50 (under 40x lens).



Immunofluorescent analysis of HepG2 cells, using KIF19 antibody 19551-1-AP at 1:25 dilution and Rhodamine-labeled goat anti-rabbit IgG (red).