

For Research Use Only

# Phospho-PLK1 (Ser326) Polyclonal antibody



Catalog Number: 19553-1-AP

2 Publications

## Basic Information

### Catalog Number:

19553-1-AP

### Size:

100ul, Concentration: 366 µg/ml by Nanodrop and 366 µg/ml by Bradford method using BSA as the standard;

### Source:

Rabbit

### Isotype:

IgG

### GenBank Accession Number:

NM\_005030

### GeneID (NCBI):

5347

### UNIPROT ID:

P53350

### Full Name:

polo-like kinase 1 (Drosophila)

### Calculated MW:

68 kDa

### Observed MW:

66 kDa

### Purification Method:

Antigen affinity purification

### Recommended Dilutions:

WB 1:200-1:1000

IHC 1:20-1:200

## Applications

### Tested Applications:

WB, IHC, ELISA

### Cited Applications:

WB

### Species Specificity:

human, mouse, rat

### Cited Species:

human, rat, mouse

### Positive Controls:

WB : MCF-7 cells,

IHC : human colon tissue,

**Note-IHC: suggested antigen retrieval with TE buffer pH 9.0; (\*) Alternatively, antigen retrieval may be performed with citrate buffer pH 6.0**

## Background Information

PLK1, also named as PLK and STPK13, belongs to the protein kinase superfamily, Ser/Thr protein kinase family and CDC5/Polo subfamily. PLK1 is a Serine/threonine-protein kinase that performs several important functions throughout M phase of the cell cycle, including the regulation of centrosome maturation and spindle assembly, the removal of cohesins from chromosome arms, the inactivation of APC/C inhibitors, and the regulation of mitotic exit and cytokinesis. The antibody is specific to Ser(326)-phospho.

## Notable Publications

| Author        | Pubmed ID | Journal              | Application |
|---------------|-----------|----------------------|-------------|
| Momoka Ota    | 34333065  | Toxicol Lett         | WB          |
| Jia-Feng Tang | 33548212  | Arch Biochem Biophys | WB          |

## Storage

### Storage:

Store at -20°C. Stable for one year after shipment.

### Storage Buffer:

PBS with 0.02% sodium azide and 50% glycerol pH 7.3.

Aliquoting is unnecessary for -20°C storage

\*\*\* 20ul sizes contain 0.1% BSA

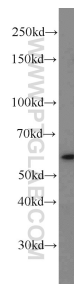
For technical support and original validation data for this product please contact:

T: 1 (888) 4PTGLAB (1-888-478-4522) (toll free in USA), or 1(312) 455-8498 (outside USA)

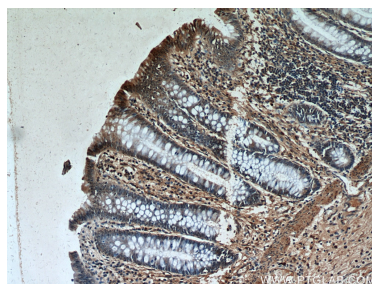
E: [proteintech@ptglab.com](mailto:proteintech@ptglab.com)  
W: [ptglab.com](http://ptglab.com)

This product is exclusively available under Proteintech Group brand and is not available to purchase from any other manufacturer.

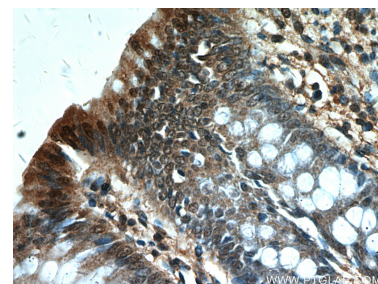
## Selected Validation Data



MCF-7 cells were subjected to SDS PAGE followed by western blot with 19553-1-AP (PLK1-phospho(S326) antibody) at dilution of 1:200 incubated at room temperature for 1.5 hours.



Immunohistochemical analysis of paraffin-embedded human colon using 19553-1-AP (PLK1-phospho(S326) antibody) at dilution of 1:50 (under 10x lens).



Immunohistochemical analysis of paraffin-embedded human colon using 19553-1-AP (PLK1-phospho(S326) antibody) at dilution of 1:50 (under 40x lens).