

For Research Use Only

RGC32 Polyclonal antibody

Catalog Number: 19556-1-AP **1 Publications**



Basic Information

Catalog Number: 19556-1-AP	GenBank Accession Number: NM_014059	Purification Method: Antigen affinity purification
Size: 150ul , Concentration: 550 µg/ml by Nanodrop;	GeneID (NCBI): 28984	Recommended Dilutions: WB 1:500-1:3000 IHC 1:50-1:500
Source: Rabbit	Full Name: chromosome 13 open reading frame 15	
Isotype: IgG	Calculated MW: 15 kDa	
	Observed MW: 13-15 kDa	

Applications

Tested Applications: WB, ELISA	Positive Controls: WB : mouse brain tissue, mouse liver tissue IHC : mouse kidney tissue,
Cited Applications: IF, WB	
Species Specificity: human, mouse	
Cited Species: mouse	

Note-IHC: suggested antigen retrieval with TE buffer pH 9.0; (*) Alternatively, antigen retrieval may be performed with citrate buffer pH 6.0

Background Information

RGC32, also named as C13orf15, modulates the activity of cell cycle-specific kinases. RGC32 enhances CDC2 activity. RGC32 may contribute to the regulation of the cell cycle. And it inhibits growth of glioma cells by promoting arrest of mitotic progression at the G2/M transition. The antibody can recognize these 2 isoforms of RGC32.

Notable Publications

Author	Pubmed ID	Journal	Application
Chenming Sun	29507108	J Immunol	WB,IF

Storage

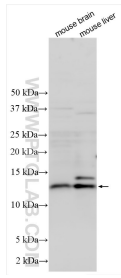
Storage:
Store at -20°C. Stable for one year after shipment.
Storage Buffer:
PBS with 0.02% sodium azide and 50% glycerol pH 7.3.
Aliquoting is unnecessary for -20°C storage

*** 20ul sizes contain 0.1% BSA

For technical support and original validation data for this product please contact:
T: 1 (888) 4PTGLAB (1-888-478-4522) (toll free in USA), or 1(312) 455-8498 (outside USA)
E: proteintech@ptglab.com
W: ptglab.com

This product is exclusively available under Proteintech Group brand and is not available to purchase from any other manufacturer.

Selected Validation Data



Various lysates were subjected to SDS PAGE followed by western blot with 19556-1-AP (RGC32 antibody) at dilution of 1:1500 incubated at room temperature for 1.5 hours.