

For Research Use Only

RGC32 Polyclonal antibody, PBS Only

Catalog Number: 19556-1-PBS

Featured Product



Basic Information

Catalog Number:

19556-1-PBS

Size:

100ug, Concentration: 1 mg/ml by Nanodrop;

Source:

Rabbit

Isotype:

IgG

GenBank Accession Number:

NM_014059

GeneID (NCBI):

28984

UNIPROT ID:

Q9H4X1

Full Name:

chromosome 13 open reading frame 15

Calculated MW:

15 kDa

Observed MW:

13-15 kDa

Purification Method:

Antigen affinity purification

Applications

Tested Applications:

WB, IHC, IF/ICC, Indirect ELISA

Species Specificity:

human, mouse

Background Information

RGC32, also named as C13orf15, modulates the activity of cell cycle-specific kinases. RGC32 enhances CDC2 activity. RGC32 may contribute to the regulation of the cell cycle. And it inhibits growth of glioma cells by promoting arrest of mitotic progression at the G2/M transition. The antibody can recognize these 2 isoforms of RGC32.

Storage

Storage:

Store at -80°C.

Storage Buffer:

PBS Only

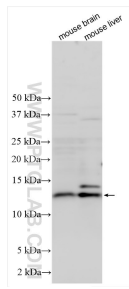
For technical support and original validation data for this product please contact:

T: 1 (888) 4PTGLAB (1-888-478-4522) (toll free in USA), or 1(312) 455-8498 (outside USA)

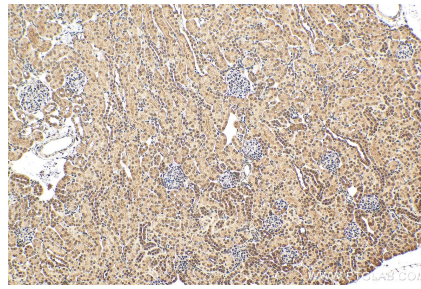
E: proteintech@ptglab.com
W: ptglab.com

This product is exclusively available under Proteintech Group brand and is not available to purchase from any other manufacturer.

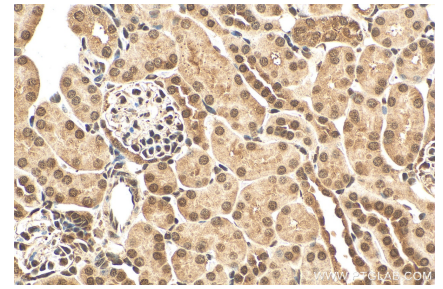
Selected Validation Data



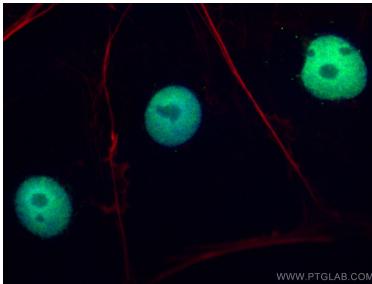
Various lysates were subjected to SDS PAGE followed by western blot with 19556-1-AP (RGC32 antibody) at dilution of 1:1500 incubated at room temperature for 1.5 hours. This data was developed using the same antibody clone with 19556-1-PBS in a different storage buffer formulation.



Immunohistochemical analysis of paraffin-embedded mouse kidney tissue slide using 19556-1-AP (RGC32 antibody) at dilution of 1:200 (under 10x lens). Heat mediated antigen retrieval with Tris-EDTA buffer (pH 9.0). This data was developed using the same antibody clone with 19556-1-PBS in a different storage buffer formulation.



Immunohistochemical analysis of paraffin-embedded mouse kidney tissue slide using 19556-1-AP (RGC32 antibody) at dilution of 1:200 (under 40x lens). Heat mediated antigen retrieval with Tris-EDTA buffer (pH 9.0). This data was developed using the same antibody clone with 19556-1-PBS in a different storage buffer formulation.



Immunofluorescent analysis of (4% PFA) fixed Caco-2 cells using RGC32 antibody (19556-1-AP) at dilution of 1:800 and CoralLite@488-Conjugated AffiniPure Goat Anti-Rabbit IgG(H+L), CL594-phalloidin (red). This data was developed using the same antibody clone with 19556-1-PBS in a different storage buffer formulation.