

For Research Use Only

Serotonin transporter Polyclonal antibody, PBS Only

Catalog Number: 19559-1-PBS

Featured Product



Basic Information

Catalog Number:

19559-1-PBS

Size:

100ug, Concentration: 1 mg/ml by Nanodrop;

Source:

Rabbit

Isotype:

IgG

GenBank Accession Number:

NM_001045

GeneID (NCBI):

6532

UNIPROT ID:

P31645

Full Name:

solute carrier family 6 (neurotransmitter transporter, serotonin), member 4

Calculated MW:

70 kDa

Observed MW:

70 kDa and 120 kDa

Purification Method:

Antigen affinity purification

Applications

Tested Applications:

WB, IF-P, Indirect ELISA

Species Specificity:

human, mouse, rat

Background Information

Serotonin transporter (SERT; SLC6A4) belongs to the sodium- and chloride-dependent monoamine transporter family. SERT is a membrane transporter that terminates the neurotransmission of serotonin, a monoaminergic neurotransmitter, through its reuptake. The SERT uptake mechanism acquires energy for active transport via ATP hydrolysis or via movement against electrochemical gradients. As an oligomeric N-glycan, SERT contains disulfide bonds between cysteine residues on the second extracellular domain. Post-translational modifications regulate the uptake kinetics and membrane trafficking of SERT, in part by regulating the proper folding and assembly of SERT in a host-dependent manner (PMID: 30394319). This antibody detected 70 kDa and 120 kDa bands in SDS-PAGE. The 120 kDa band corresponds to the glycosylation form of SERT (PMID: 11311448).

Storage

Storage:

Store at -80°C.

Storage Buffer:

PBS only, pH7.3

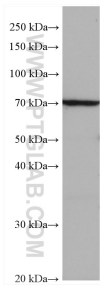
For technical support and original validation data for this product please contact:

T: 1 (888) 4PTGLAB (1-888-478-4522) (toll free in USA), or 1(312) 455-8498 (outside USA)

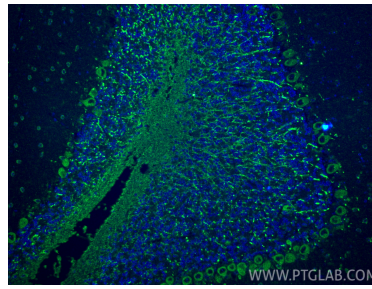
E: proteintech@ptglab.com
W: ptglab.com

This product is exclusively available under Proteintech Group brand and is not available to purchase from any other manufacturer.

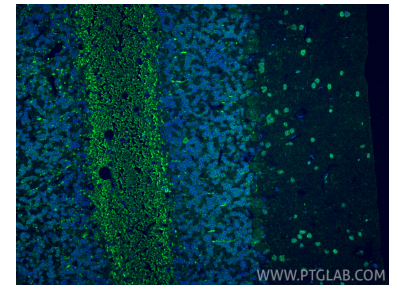
Selected Validation Data



SH-SY5Y cells were subjected to SDS PAGE followed by western blot with 19559-1-AP (Serotonin transporter antibody) at dilution of 1:800 incubated at room temperature for 1.5 hours. This data was developed using the same antibody clone with 19559-1-PBS in a different storage buffer formulation.



Immunofluorescent analysis of (4% PFA) fixed paraffin-embedded mouse cerebellum tissue using Serotonin transporter antibody (19559-1-AP) at dilution of 1:1000 and CoraLite@488-Conjugated Goat Anti-Rabbit IgG(H+L) (SA00013-2). Heat mediated antigen retrieval with Tris-EDTA buffer (pH 9.0). This data was developed using the same antibody clone with 19559-1-PBS in a different storage buffer formulation.



Immunofluorescent analysis of (4% PFA) fixed paraffin-embedded rat cerebellum tissue using Serotonin transporter antibody (19559-1-AP) at dilution of 1:200 and CoraLite@488-Conjugated Goat Anti-Rabbit IgG(H+L) (SA00013-2). Heat mediated antigen retrieval with Tris-EDTA buffer (pH 9.0). This data was developed using the same antibody clone with 19559-1-PBS in a different storage buffer formulation.