

For Research Use Only

Phospho-SPHK1 (Ser225) Polyclonal antibody

Catalog Number: 19561-1-AP

Featured Product

15 Publications



Basic Information

Catalog Number:

19561-1-AP

Size:

100ul, Concentration: 700 ug/ml by Nanodrop;

Source:

Rabbit

Isotype:

IgG

GenBank Accession Number:

NM_182965

GeneID (NCBI):

8877

UNIPROT ID:

Q9NYA1

Full Name:

sphingosine kinase 1

Calculated MW:

51 kDa

Observed MW:

45-47 kDa

Purification Method:

Antigen affinity purification

Recommended Dilutions:

WB 1:500-1:1000

Applications

Tested Applications:

WB, ELISA

Cited Applications:

WB, IHC, IF

Species Specificity:

human

Cited Species:

human, mouse, rat

Positive Controls:

WB : L02 cells, human testis tissue

Background Information

SPHK1, also named as SPHK and SPK, catalyzes the phosphorylation of sphingosine to form sphingosine 1-phosphate (SPP), a lipid mediator with both intra- and extracellular functions. SPHK1 acts on D-erythro-sphingosine and to a lesser extent sphinganine, but not other lipids, such as D, L-threo-dihydrosphingosine, N, N-dimethylsphingosine, diacylglycerol, ceramide, or phosphatidylinositol. The antibody is specific to Ser(311)-phospho of SPHK1(isoform2) or Ser(225)-phospho of SPHK1(isoform1).

Notable Publications

Author	Pubmed ID	Journal	Application
Pei-Rong Gan	36108735	Eur J Pharmacol	WB
Federica Pierucci	30279138	Biochim Biophys Acta Mol Basis Dis	WB
Zhiyong Shen	31723122	Cell Death Dis	WB

Storage

Storage:

Store at -20°C. Stable for one year after shipment.

Storage Buffer:

PBS with 0.02% sodium azide and 50% glycerol pH 7.3.

Aliquoting is unnecessary for -20°C storage

*** 20ul sizes contain 0.1% BSA

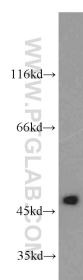
For technical support and original validation data for this product please contact:

T: 1 (888) 4PTGLAB (1-888-478-4522) (toll free in USA), or 1(312) 455-8498 (outside USA)

E: proteintech@ptglab.com
W: ptglab.com

This product is exclusively available under Proteintech Group brand and is not available to purchase from any other manufacturer.

Selected Validation Data



L02 cells were subjected to SDS PAGE followed by western blot with 19561-1-AP (SPHK1-Phospho-Ser225 antibody) at dilution of 1:500 incubated at room temperature for 1.5 hours.