

For Research Use Only

PGPEP1 Polyclonal antibody

Catalog Number: 19566-1-AP



Basic Information

Catalog Number:

19566-1-AP

Size:

150ul, Concentration: 450 ug/ml by Nanodrop and 267 ug/ml by Bradford method using BSA as the standard;

Source:

Rabbit

Isotype:

IgG

GenBank Accession Number:

NM_017712

GeneID (NCBI):

54858

UNIPROT ID:

Q9NXJ5

Full Name:

pyroglutamyl-peptidase I

Calculated MW:

23 kDa

Observed MW:

20-23 kDa

Purification Method:

Antigen affinity purification

Recommended Dilutions:

WB 1:500-1:1000

IF/ICC 1:10-1:100

Applications

Tested Applications:

WB, IF/ICC, ELISA

Species Specificity:

human, mouse

Positive Controls:

WB : human brain tissue,

IF/ICC : HepG2 cells,

Background Information

PGPEP1, also named as PGPI, belongs to the peptidase C15 family. PGPEP1 removes 5-oxoproline from various penultimate amino acid residues except L-proline.

Storage

Storage:

Store at -20°C. Stable for one year after shipment.

Storage Buffer:

PBS with 0.02% sodium azide and 50% glycerol pH 7.3.

Aliquoting is unnecessary for -20°C storage

*** 20ul sizes contain 0.1% BSA

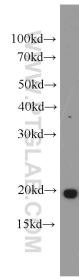
For technical support and original validation data for this product please contact:

T: 1 (888) 4PTGLAB (1-888-478-4522) (toll free in USA), or 1(312) 455-8498 (outside USA)

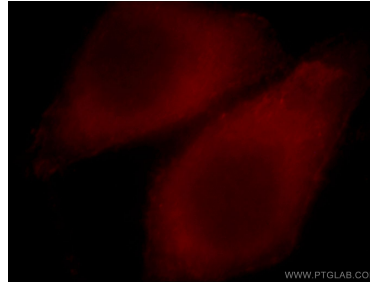
E: proteintech@ptglab.com
W: ptglab.com

This product is exclusively available under Proteintech Group brand and is not available to purchase from any other manufacturer.

Selected Validation Data



human brain tissue were subjected to SDS PAGE followed by western blot with 19566-1-AP (PGPEP1 antibody) at dilution of 1:600 incubated at room temperature for 1.5 hours.



Immunofluorescent analysis of HepG2 cells, using PGPEP1 antibody 19566-1-AP at 1:25 dilution and Rhodamine-labeled goat anti-rabbit IgG (red).