

For Research Use Only

# PPP3CC Polyclonal antibody

Catalog Number: 19653-1-AP

1 Publications



## Basic Information

**Catalog Number:**

19653-1-AP

**Size:**

150ul , Concentration: 400 µg/ml by Nanodrop and 313 µg/ml by Bradford method using BSA as the standard;

**Source:**

Rabbit

**Isotype:**

IgG

**Immunogen Catalog Number:**

AG7619

**GenBank Accession Number:**

BC004864

**GeneID (NCBI):**

5533

**Full Name:**

protein phosphatase 3 (formerly 2B), catalytic subunit, gamma isoform

**Calculated MW:**

57 kDa

**Observed MW:**

57 kDa

**Purification Method:**

Antigen affinity purification

**Recommended Dilutions:**

WB 1:500-1:2000

## Applications

**Tested Applications:**

WB,ELISA

**Cited Applications:**

WB

**Species Specificity:**

human, mouse

**Cited Species:**

mouse

**Positive Controls:**

WB : mouse testis tissue, human testis tissue, Jurkat cells, MCF-7 cells, mouse brain tissue, mouse skeletal muscle tissue

## Background Information

## Notable Publications

Author	Pubmed ID	Journal	Application
Souvik Dey	31914663	FASEB J	WB

## Storage

**Storage:**

Store at -20°C. Stable for one year after shipment.

**Storage Buffer:**

PBS with 0.02% sodium azide and 50% glycerol pH 7.3.

Aliquoting is unnecessary for -20°C storage

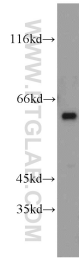
For technical support and original validation data for this product please contact:

T: 1 (888) 4PTGLAB (1-888-478-4522) (toll free in USA), or 1(312) 455-8498 (outside USA)

E: proteintech@ptglab.com  
W: ptglab.com

This product is exclusively available under Proteintech Group brand and is not available to purchase from any other manufacturer.

## Selected Validation Data



mouse testis tissue were subjected to SDS PAGE followed by western blot with 19653-1-AP (PPP3CC antibody) at dilution of 1:500 incubated at room temperature for 1.5 hours.