

For Research Use Only

RHOG-Specific Polyclonal antibody

Catalog Number: 19671-1-AP



Basic Information

Catalog Number: 19671-1-AP	GenBank Accession Number: NM_001665	Purification Method: Antigen affinity purification
Size: 150ul , Concentration: 270 µg/ml by Nanodrop and 267 µg/ml by Bradford method using BSA as the standard;	GeneID (NCBI): 391	Recommended Dilutions: WB 1:500-1:2000
Source: Rabbit	Full Name: ras homolog gene family, member G (rho G)	
Isotype: IgG	Calculated MW: 21 kDa	
	Observed MW: 21 kDa	

Applications

Tested Applications: WB, ELISA	Positive Controls: WB : MDA-MB-453s cells, C6 cells, HeLa cells, MCF-7 cells, Neuro-2a cells, NIH/3T3 cells
Species Specificity: human, mouse, rat	

Background Information

RHOG, also named as ARHG, belongs to the small GTPase superfamily and Rho family. It is required for the formation of membrane ruffles during macropinocytosis. And it is required for the formation of cup-like structures during trans-endothelial migration of leukocytes. In case of Salmonella enterica infection, it is activated by SopB and SGEF, which induces cytoskeleton rearrangements and promotes bacterial entry. This antibody is specific to RHOG.

Storage

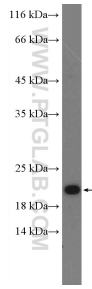
Storage:
Store at -20°C. Stable for one year after shipment.
Storage Buffer:
PBS with 0.02% sodium azide and 50% glycerol pH 7.3.
Aliquoting is unnecessary for -20°C storage

*** 20ul sizes contain 0.1% BSA

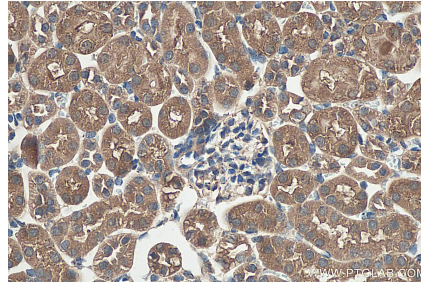
For technical support and original validation data for this product please contact:
T: 1 (888) 4PTGLAB (1-888-478-4522) (toll free in USA), or 1(312) 455-8498 (outside USA) E: proteintech@ptglab.com W: ptglab.com

This product is exclusively available under Proteintech Group brand and is not available to purchase from any other manufacturer.

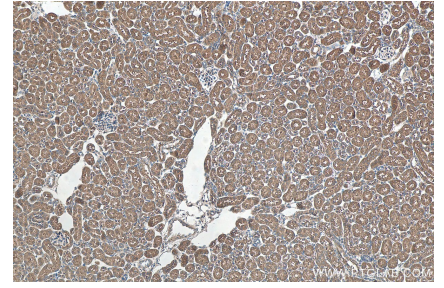
Selected Validation Data



MDA-MB-453s cells were subjected to SDS PAGE followed by western blot with 19671-1-AP (RHO G-Specific Antibody) at dilution of 1:1000 incubated at room temperature for 1.5 hours.



Immunohistochemical analysis of paraffin-embedded mouse kidney tissue slide using 19671-1-AP (RHO G-Specific antibody) at dilution of 1:200 (under 40x lens). Heat mediated antigen retrieval with Tris-EDTA buffer (pH 9.0).



Immunohistochemical analysis of paraffin-embedded mouse kidney tissue slide using 19671-1-AP (RHO G-Specific antibody) at dilution of 1:200 (under 10x lens). Heat mediated antigen retrieval with Tris-EDTA buffer (pH 9.0).