

For Research Use Only

FOXL2-Specific Polyclonal antibody, PBS Only

Catalog Number: 19672-1-PBS

Featured Product



Basic Information

Catalog Number:

19672-1-PBS

Size:

100ug, Concentration: 1 mg/ml by
Nanodrop;

Source:

Rabbit

Isotype:

IgG

GenBank Accession Number:

NM_023067

GeneID (NCBI):

668

UNIPROT ID:

P58012

Full Name:

forkhead box L2

Calculated MW:

39 kDa

Observed MW:

49 kDa

Purification Method:

Antigen affinity purification

Applications

Tested Applications:

WB, Indirect ELISA

Species Specificity:

human, mouse, rat

Background Information

FOXL2 is probable a transcriptional regulator. It is required to maintain the female phenotype throughout adulthood, and may provide clues to female infertility. Defects in FOXL2 are a cause of blepharophimosis, ptosis, and epicanthus inversus syndrome (BPES) Defects in FOXL2 are a cause of premature ovarian failure type 3 (POF3). This antibody is specific to the C-term of FOXL2.

Storage

Storage:

Store at -80°C.

Storage Buffer:

PBS only, pH7.3

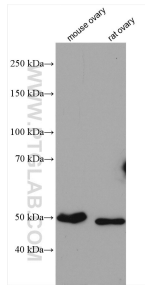
For technical support and original validation data for this product please contact:

T: 1 (888) 4PTGLAB (1-888-478-4522) (toll free
in USA), or 1(312) 455-8498 (outside USA)

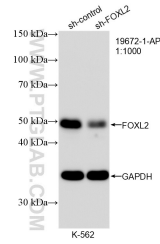
E: proteintech@ptglab.com
W: ptglab.com

This product is exclusively available under Proteintech Group brand and is not available to purchase from any other manufacturer.

Selected Validation Data



Various lysates were subjected to SDS PAGE followed by western blot with 19672-1-AP (FOXL2-Specific antibody) at dilution of 1:1000 incubated at room temperature for 1.5 hours. This data was developed using the same antibody clone with 19672-1-PBS in a different storage buffer formulation.



WB result of FOXL2-Specific antibody (19672-1-AP; 1:1000; incubated at room temperature for 1.5 hours) with sh-Control and sh-FOXL2-Specific transfected K-562 cells. This data was developed using the same antibody clone with 19672-1-PBS in a different storage buffer formulation.