

For Research Use Only

# RRM1-Specific Polyclonal antibody

Catalog Number: 19686-1-AP



## Basic Information

<b>Catalog Number:</b> 19686-1-AP	<b>GenBank Accession Number:</b> NM_001033	<b>Purification Method:</b> Antigen affinity purification
<b>Size:</b> 150ul , Concentration: 260 µg/ml by Nanodrop and 247 µg/ml by Bradford method using BSA as the standard;	<b>GeneID (NCBI):</b> 6240	<b>Recommended Dilutions:</b> WB 1:200-1:1000 IF 1:10-1:100
<b>Source:</b> Rabbit	<b>Full Name:</b> ribonucleotide reductase M1	
<b>Isotype:</b> IgG	<b>Calculated MW:</b> 90 kDa	
	<b>Observed MW:</b> 90 kDa	

## Applications

<b>Tested Applications:</b> IF, WB, ELISA	<b>Positive Controls:</b> WB : A549 cells, HEK-293 cells, HeLa cells IF : HepG2 cells,
<b>Species Specificity:</b> human, mouse, rat	

## Background Information

RRM1, also named as RR1, belongs to the ribonucleoside diphosphate reductase large chain family. RRM1 provides the precursors necessary for DNA synthesis. RRM1 catalyzes the biosynthesis of deoxyribonucleotides from the corresponding ribonucleotides. RRM1 is a key enzyme in DNA synthesis: low level expression of RRM1 is associated with poor survival. RRM1 is a prognostic marker of NSCLC. The antibody is specific to RRM1.

## Storage

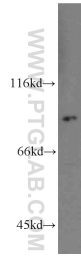
**Storage:**  
Store at -20°C. Stable for one year after shipment.  
**Storage Buffer:**  
PBS with 0.02% sodium azide and 50% glycerol pH 7.3.  
Aliquoting is unnecessary for -20°C storage

\*\*\* 20ul sizes contain 0.1% BSA

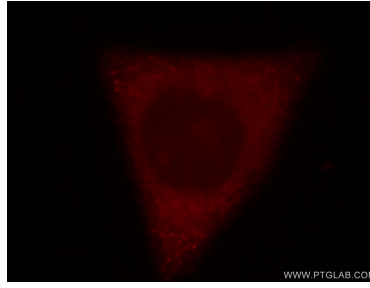
For technical support and original validation data for this product please contact:  
T: 1 (888) 4PTGLAB (1-888-478-4522) (toll free in USA), or 1(312) 455-8498 (outside USA)  
E: proteintech@ptglab.com  
W: ptglab.com

This product is exclusively available under Proteintech Group brand and is not available to purchase from any other manufacturer.

## Selected Validation Data



A549 cells were subjected to SDS PAGE followed by western blot with 19686-1-AP (RRM1-Specific antibody) at dilution of 1:100 incubated at room temperature for 1.5 hours.



Immunofluorescent analysis of HepG2 cells, using RRM1 antibody 19686-1-AP at 1:25 dilution and Rhodamine-labeled goat anti-rabbit IgG (red).