

For Research Use Only

EIF2C1-Specific Polyclonal antibody

Catalog Number: 19690-1-AP

3 Publications



Basic Information

Catalog Number:

19690-1-AP

Size:

150ul, Concentration: 400 ug/ml by Nanodrop and 393 ug/ml by Bradford method using BSA as the standard;

Source:

Rabbit

Isotype:

IgG

GenBank Accession Number:

NM_012199

GeneID (NCBI):

26523

UNIPROT ID:

Q9UL18

Full Name:

eukaryotic translation initiation factor 2C, 1

Calculated MW:

97 kDa

Observed MW:

97 kDa

Purification Method:

Antigen affinity purification

Recommended Dilutions:

WB 1:500-1:2000

IHC 1:20-1:200

IF/ICC 1:10-1:100

Applications

Tested Applications:

WB, IHC, IF/ICC, ELISA

Cited Applications:

WB, IF

Species Specificity:

human, mouse, rat

Cited Species:

human, mouse

Note-IHC: suggested antigen retrieval with TE buffer pH 9.0; (*) Alternatively, antigen retrieval may be performed with citrate buffer pH 6.0

Positive Controls:

WB : HeLa cells, HEK-293 cells, Jurkat cells, K-562 cells, NIH/3T3 cells

IHC : human cervical cancer tissue, human ovary tumor tissue

IF/ICC : HepG2 cells,

Background Information

EIF2C1, also named as AGO1, belongs to the argonaute family and Ago subfamily. EIF2C1 is required for RNA-mediated gene silencing (RNAi). It binds to short RNAs such as microRNAs (miRNAs) or short interfering RNAs (siRNAs), and represses the translation of mRNAs which are complementary to them. Lacks endonuclease activity and does not appear to cleave target mRNAs. EIF2C1 may also be required for transcriptional gene silencing (TGS) of promoter regions which are complementary to bound short antigenic RNAs (agRNAs). The antibody is specific to EIF2C1.

Notable Publications

Author	Pubmed ID	Journal	Application
Xueting Wang	35284630	Mol Ther Oncolytics	WB
Belinda J Goldie	28878619	Front Mol Neurosci	IF
Norjin Zolboot	37808721	bioRxiv	IF

Storage

Storage:

Store at -20°C. Stable for one year after shipment.

Storage Buffer:

PBS with 0.02% sodium azide and 50% glycerol pH 7.3.

Aliquoting is unnecessary for -20°C storage

*** 20ul sizes contain 0.1% BSA

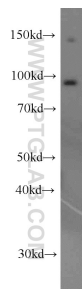
For technical support and original validation data for this product please contact:

T: 1 (888) 4PTGLAB (1-888-478-4522) (toll free in USA), or 1(312) 455-8498 (outside USA)

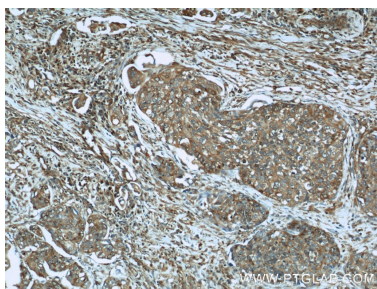
E: proteintech@ptglab.com
W: ptglab.com

This product is exclusively available under Proteintech Group brand and is not available to purchase from any other manufacturer.

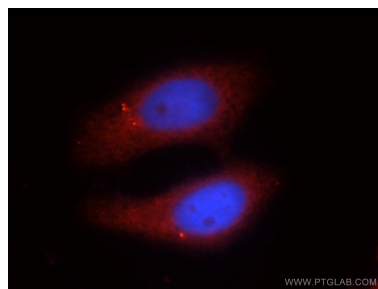
Selected Validation Data



HeLa cells were subjected to SDS PAGE followed by western blot with 19690-1-AP (EIF2C1-Specific antibody) at dilution of 1:1000 incubated at room temperature for 1.5 hours.



Immunohistochemical analysis of paraffin-embedded human cervical cancer using 19690-1-AP (EIF2C1-Specific antibody) at dilution of 1:50 (under 10x Lens).



Immunofluorescent analysis of HepG2 cells using 19690-1-AP (EIF2C1-Specific antibody) at dilution of 1:25 and Rhodamine-Goat anti-Rabbit IgG.