

# Integrin beta-6-Specific Polyclonal antibody

Catalog Number: 19695-1-AP

7 Publications

## Basic Information

## Catalog Number:

19695-1-AP

## Size:

150ul , Concentration: 260 µg/ml by Bradford method using BSA as the standard;

## Source:

Rabbit

## Isotype:

IgG

## GenBank Accession Number:

NM\_000888

## GeneID (NCBI):

3694

## UNIPROT ID:

P18564

## Full Name:

integrin, beta 6

## Calculated MW:

86 kDa

## Observed MW:

97 kDa

## Purification Method:

Antigen affinity purification

## Recommended Dilutions:

WB 1:500-1:1000

IHC 1:20-1:200

IF/ICC 1:50-1:500

## Applications

## Tested Applications:

WB, IF, IHC, ELISA

## Cited Applications:

WB, IP, IF, IHC

## Species Specificity:

human

## Cited Species:

human, rat, mouse

**Note-IHC: suggested antigen retrieval with TE buffer pH 9.0; (\*) Alternatively, antigen retrieval may be performed with citrate buffer pH 6.0**

## Positive Controls:

WB : A549 cells, A2780 cells

IHC : human lung tissue,

IF/ICC : A549 cells,

## Background Information

ITGB6 belongs to the integrin beta chain family. ITGB6 is a receptor for fibronectin and cytotactin. It recognizes the sequence R-G-D in its ligands. Internalisation of integrin alpha-V/beta-6 via clathrin-mediated endocytosis promotes carcinoma cell invasion. The antibody is specific to ITGB6.

## Notable Publications

Author	Pubmed ID	Journal	Application
Dalong Cao	30808674	Cancer Res	WB
Kathleen K Catignas	32744761	Glia	WB
Feikai Lin	35392966	J Exp Clin Cancer Res	WB,IF,IP

## Storage

## Storage:

Store at -20°C. Stable for one year after shipment.

## Storage Buffer:

PBS with 0.02% sodium azide and 50% glycerol pH 7.3.

Aliquoting is unnecessary for -20°C storage

\*\*\* 20ul sizes contain 0.1% BSA

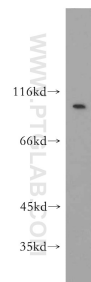
For technical support and original validation data for this product please contact:

T: 1 (888) 4PTGLAB (1-888-478-4522) (toll free in USA), or 1(312) 455-8498 (outside USA)

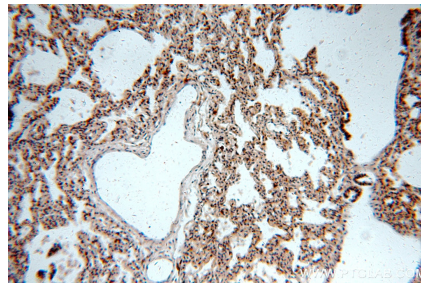
E: [proteintech@ptglab.com](mailto:proteintech@ptglab.com)  
W: [ptglab.com](http://ptglab.com)

This product is exclusively available under Proteintech Group brand and is not available to purchase from any other manufacturer.

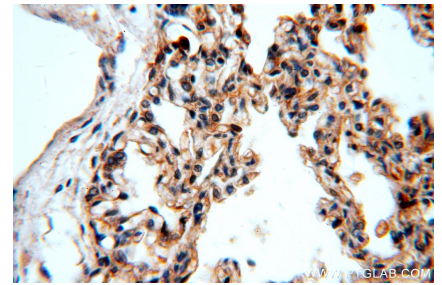
## Selected Validation Data



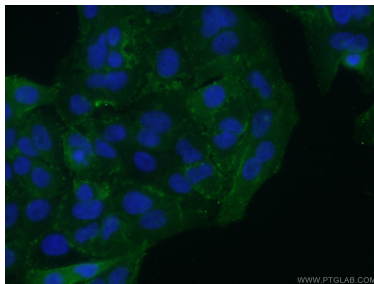
A549 cells were subjected to SDS PAGE followed by western blot with 19695-1-AP (ITGB6-Specific antibody) at dilution of 1:500 incubated at room temperature for 1.5 hours.



Immunohistochemical analysis of paraffin-embedded human lung using 19695-1-AP (ITGB6-Specific antibody) at dilution of 1:100 (under 10x lens).



Immunohistochemical analysis of paraffin-embedded human lung using 19695-1-AP (ITGB6-Specific antibody) at dilution of 1:100 (under 40x lens).



Immunofluorescent analysis of (10% Formaldehyde) fixed A549 cells using 19695-1-AP (Integrin beta-6-Specific antibody) at dilution of 1:50 and Alexa Fluor 488-conjugated AffiniPure Goat Anti-Rabbit IgG(H+L).