

For Research Use Only

LAMC2 Polyclonal antibody

Catalog Number: 19698-1-AP **4 Publications**



Basic Information

Catalog Number: 19698-1-AP	GenBank Accession Number: NM_005562	Purification Method: Antigen affinity purification
Size: 150ul, Concentration: 900 µg/ml by Nanodrop and 413 µg/ml by Bradford method using BSA as the standard;	GeneID (NCBI): 3918	Recommended Dilutions: WB 1:500-1:1000
Source: Rabbit	UNIPROT ID: Q13753	
Isotype: IgG	Full Name: laminin, gamma 2	
	Calculated MW: 131 kDa	
	Observed MW: 140 kDa	

Applications

Tested Applications: WB, ELISA	Positive Controls: WB : A431 cells,
Cited Applications: WB, IF, IHC	
Species Specificity: human, mouse, rat	
Cited Species: human, rat	

Background Information

LAMC2, also named as LAMB2T and LAMNB2, is thought to mediate the attachment, migration and organization of cells into tissues during embryonic development by interacting with other extracellular matrix components. LAMC2 binds to cells via a high affinity receptor. Laminin exerts cell-scattering activity toward a wide variety of cells, including epithelial, endothelial, and fibroblastic cells.

Notable Publications

Author	Pubmed ID	Journal	Application
Giricea Lorusso	36070364	Sci Transl Med	WB,IHC
Caiqun Huang	33179081	Mol Med Rep	WB
Caiming Xu	32244009	J Proteomics	WB

Storage

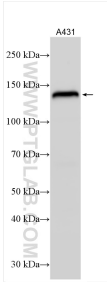
Storage:
Store at -20°C. Stable for one year after shipment.
Storage Buffer:
PBS with 0.02% sodium azide and 50% glycerol pH 7.3.
Aliquoting is unnecessary for -20°C storage

*** 20ul sizes contain 0.1% BSA

For technical support and original validation data for this product please contact:
T: 1 (888) 4PTGLAB (1-888-478-4522) (toll free in USA), or 1(312) 455-8498 (outside USA)
E: proteintech@ptglab.com
W: ptglab.com

This product is exclusively available under Proteintech Group brand and is not available to purchase from any other manufacturer.

Selected Validation Data



A431 cells were subjected to SDS PAGE followed by western blot with 19698-1-AP (LAMC2 antibody) at dilution of 1:800 incubated at room temperature for 1.5 hours.