

For Research Use Only

# CYP4F3 Polyclonal antibody

Catalog Number:19701-1-AP



## Basic Information

### Catalog Number:

19701-1-AP

### Size:

150ul , Concentration: 600 ug/ml by Nanodrop and 460 ug/ml by Bradford method using BSA as the standard;

### Source:

Rabbit

### Isotype:

IgG

### GenBank Accession Number:

NM\_000896

### GeneID (NCBI):

4051

### UNIPROT ID:

Q08477

### Full Name:

cytochrome P450, family 4, subfamily F, polypeptide 3

### Calculated MW:

60 kDa

### Observed MW:

60 kDa

### Purification Method:

Antigen affinity purification

### Recommended Dilutions:

WB 1:200-1:1000

## Applications

### Tested Applications:

WB, ELISA

### Species Specificity:

human

### Positive Controls:

WB : HL-60 cells,

## Background Information

CYP4F3, also named as LTB4H and CYPIVF3, belongs to the cytochrome P450 family. Cytochromes P450 are a group of heme-thiolate monooxygenases. CYP4F3 requires molecular oxygen and NADPH for the omega-hydroxylation of LTB4, a potent chemoattractant for polymorphonuclear leukocytes.

## Storage

### Storage:

Store at -20°C. Stable for one year after shipment.

### Storage Buffer:

PBS with 0.02% sodium azide and 50% glycerol pH 7.3.

Aliquoting is unnecessary for -20°C storage

\*\*\* 20ul sizes contain 0.1% BSA

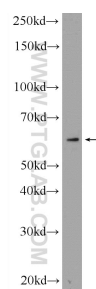
For technical support and original validation data for this product please contact:

T: 1 (888) 4PTGLAB (1-888-478-4522) (toll free in USA), or 1(312) 455-8498 (outside USA)

E: [proteintech@ptglab.com](mailto:proteintech@ptglab.com)  
W: [ptglab.com](http://ptglab.com)

This product is exclusively available under Proteintech Group brand and is not available to purchase from any other manufacturer.

## Selected Validation Data



HL-60 cells were subjected to SDS PAGE followed by western blot with 19701-1-AP (CYP4F3 Antibody) at dilution of 1:300 incubated at 4 degree celsius over night.