

For Research Use Only

PYGM-Specific Polyclonal antibody

Catalog Number: 19716-1-AP

Featured Product

6 Publications



Basic Information

Catalog Number: 19716-1-AP	GenBank Accession Number: NM_005609	Purification Method: Antigen affinity purification
Size: 150ul , Concentration: 600 µg/ml by Nanodrop and 333 µg/ml by Bradford method using BSA as the standard;	GeneID (NCBI): 5837	Recommended Dilutions: WB 1:2000-1:10000 IHC 1:20-1:200 IF 1:20-1:200
Source: Rabbit	Full Name: phosphorylase, glycogen, muscle	
Isotype: IgG	Calculated MW: 97 kDa	
	Observed MW: 97-105 kDa	

Applications

Tested Applications:

IF, IHC, WB, ELISA

Cited Applications:

WB

Species Specificity:

human, mouse, rat

Cited Species:

human, mouse

Note-IHC: suggested antigen retrieval with TE buffer pH 9.0; (*) Alternatively, antigen retrieval may be performed with citrate buffer pH 6.0

Positive Controls:

WB : mouse heart tissue, rat heart

IHC : human skeletal muscle tissue, human liver tissue

IF : HepG2 cells,

Background Information

PYGM belongs to the glycogen phosphorylase family. Phosphorylase is an important allosteric enzyme in carbohydrate metabolism. Enzymes from different sources differ in their regulatory mechanisms and in their natural substrates. However, all known phosphorylases share catalytic and structural properties. Defects in PYGM are the cause of glycogen storage disease type 5 (GSD5) which also known as McArdle disease. The antibody is specific to PYGM.

Notable Publications

Author	Pubmed ID	Journal	Application
Omer Keinan	34707293	Nature	WB
Jia-Hua Qu	36359893	Cells	WB
Lingyu Jiang	35761940	Oncol Lett	WB

Storage

Storage:

Store at -20°C. Stable for one year after shipment.

Storage Buffer:

PBS with 0.02% sodium azide and 50% glycerol pH 7.3.

Aliquoting is unnecessary for -20°C storage

*** 20ul sizes contain 0.1% BSA

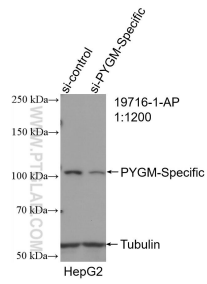
For technical support and original validation data for this product please contact:

T: 1 (888) 4PTGLAB (1-888-478-4522) (toll free in USA), or 1(312) 455-8498 (outside USA)

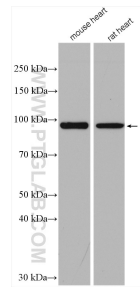
E: proteintech@ptglab.com
W: ptglab.com

This product is exclusively available under Proteintech Group brand and is not available to purchase from any other manufacturer.

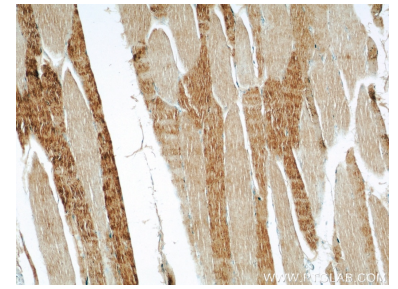
Selected Validation Data



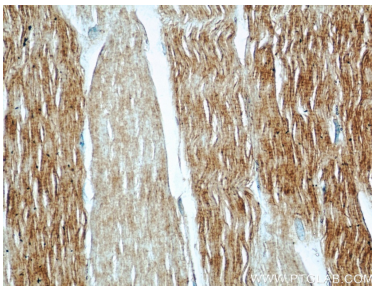
WB result of PYGM-Specific antibody (19716-1-AP; 1:1200; incubated at room temperature for 1.5 hours) with sh-Control and sh-PYGM-Specific transfected HepG2 cells.



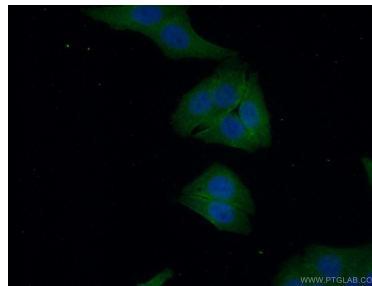
Various lysates were subjected to SDS PAGE followed by western blot with 19716-1-AP (PYGM-Specific antibody) at dilution of 1:5000 incubated at room temperature for 1.5 hours.



Immunohistochemical analysis of paraffin-embedded human skeletal muscle using 19716-1-AP (PYGM-Specific antibody) at dilution of 1:50 (under 10x lens).



Immunohistochemical analysis of paraffin-embedded human skeletal muscle using 19716-1-AP (PYGM-Specific antibody) at dilution of 1:50 (under 40x lens).



Immunofluorescent analysis of (10% Formaldehyde) fixed HepG2 cells using 19716-1-AP (PYGM-Specific antibody) at dilution of 1:50 and Alexa Fluor 488-conjugated AffiniPure Goat Anti-Rabbit IgG(H+L).