

For Research Use Only

SNTB1-Specific Polyclonal antibody, PBS Only

Catalog Number: 19719-1-PBS

Featured Product



Basic Information

Catalog Number:

19719-1-PBS

Size:

100ug, Concentration: 1 mg/ml by
Nanodrop;

Source:

Rabbit

Isotype:

IgG

GenBank Accession Number:

NM_021021

GeneID (NCBI):

6641

UNIPROT ID:

Q13884

Full Name:

syntrophin, beta 1 (dystrophin-
associated protein A 1, 59kDa, basic
component 1)

Calculated MW:

58 kDa

Observed MW:

58 kDa

Purification Method:

Antigen affinity purification

Applications

Tested Applications:

WB, Indirect ELISA

Species Specificity:

human, mouse

Background Information

SNTB1, also named as SNT2B1, BSYN2 and TIP-43, belongs to the syntrophin family. SNTB1 is an adapter protein that binds to and probably organizes the subcellular localization of a variety of membrane proteins. It may link various receptors to the actin cytoskeleton and the dystrophin glycoprotein complex. This antibody is specific to SNTB1.

Storage

Storage:

Store at -80°C.

Storage Buffer:

PBS Only

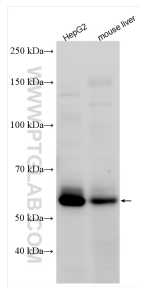
For technical support and original validation data for this product please contact:

T: 1 (888) 4PTGLAB (1-888-478-4522) (toll free
in USA), or 1(312) 455-8498 (outside USA)

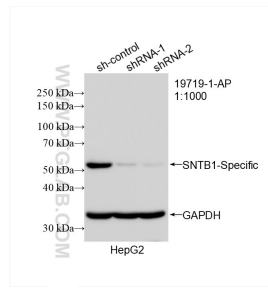
E: proteintech@ptglab.com
W: ptglab.com

This product is exclusively available under Proteintech Group brand and is not available to purchase from any other manufacturer.

Selected Validation Data



Various lysates were subjected to SDS PAGE followed by western blot with 19719-1-AP (SNTB1-Specific antibody) at dilution of 1:500 incubated at room temperature for 1.5 hours. This data was developed using the same antibody clone with 19719-1-PBS in a different storage buffer formulation.



WB result of SNTB1-Specific antibody (19719-1-AP; 1:1000; incubated at room temperature for 1.5 hours) with sh-Control and sh-SNTB1-Specific transfected HepG2 cells. This data was developed using the same antibody clone with 19719-1-PBS in a different storage buffer formulation.