

For Research Use Only

STATH Polyclonal antibody

Catalog Number: 19724-1-AP

1 Publications



Basic Information

Catalog Number: 19724-1-AP	GenBank Accession Number: NM_003154	Purification Method: Antigen affinity purification
Size: 150ul , Concentration: 350 µg/ml by Nanodrop and 180 µg/ml by Bradford method using BSA as the standard;	GeneID (NCBI): 6779	Recommended Dilutions: WB 1:2000-1:10000
Source: Rabbit	Full Name: statherin	
Isotype: IgG	Calculated MW: 7 kDa	
	Observed MW: 7 kDa	

Applications

Tested Applications: WB, ELISA	Positive Controls: WB : human saliva, mouse pancreas tissue
Cited Applications: WB	
Species Specificity: human, mouse	
Cited Species: human	

Background Information

STATH belongs to the histatin/statherin family. STATH is a salivary protein that stabilizes saliva supersaturated with calcium salts by inhibiting the precipitation of calcium phosphate salts. It also modulates hydroxyapatite crystal formation on the tooth surface.

Notable Publications

Author	Pubmed ID	Journal	Application
Masahiro Izumi	25793156	BBA Clin	WB

Storage

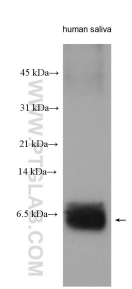
Storage:
Store at -20°C. Stable for one year after shipment.
Storage Buffer:
PBS with 0.02% sodium azide and 50% glycerol pH 7.3.
Aliquoting is unnecessary for -20°C storage

*** 20ul sizes contain 0.1% BSA

For technical support and original validation data for this product please contact:
T: 1 (888) 4PTGLAB (1-888-478-4522) (toll free in USA), or 1(312) 455-8498 (outside USA)
E: proteintech@ptglab.com
W: ptglab.com

This product is exclusively available under Proteintech Group brand and is not available to purchase from any other manufacturer.

Selected Validation Data



human saliva were subjected to SDS PAGE followed by western blot with 19724-1-AP (STATH antibody) at dilution of 1:5000 incubated at room temperature for 1.5 hours.