

For Research Use Only

KALRN Polyclonal antibody

Catalog Number: 19740-1-AP

Featured Product

4 Publications



Basic Information

Catalog Number:

19740-1-AP

Size:

150ul, Concentration: 700 ug/ml by Nanodrop and 333 ug/ml by Bradford method using BSA as the standard;

Source:

Rabbit

Isotype:

IgG

GenBank Accession Number:

NM_007064

GeneID (NCBI):

8997

UNIPROT ID:

O60229

Full Name:

kalirin, RhoGEF kinase

Calculated MW:

340 kDa

Observed MW:

200 kDa

Purification Method:

Antigen affinity purification

Recommended Dilutions:

WB 1:1000-1:4000

IHC 1:50-1:500

IF/ICC 1:50-1:500

Applications

Tested Applications:

WB, IHC, IF/ICC, ELISA

Cited Applications:

WB, IF

Species Specificity:

human, mouse, rat

Cited Species:

human, rat, mouse

Note-IHC: suggested antigen retrieval with TE buffer pH 9.0; (*) Alternatively, antigen retrieval may be performed with citrate buffer pH 6.0

Positive Controls:

WB : mouse colon tissue, human kidney tissue, human brain tissue, rat colon tissue

IHC : mouse brain tissue,

IF/ICC : HeLa cells,

Background Information

KALRN, also named as DUET, DUO, HAPIP and TRAD, belongs to the protein kinase superfamily and CAMK Ser/Thr protein kinase family. KALRN promotes the exchange of GDP by GTP. KALRN activates specific Rho GTPase family members, thereby inducing various signaling mechanisms that regulate neuronal shape, growth, and plasticity, through their effects on the actin cytoskeleton. KALRN induces lamellipodia independent of its GEF activity. The antibody can recognize isoform1 and isoform2 of KALRN.

Notable Publications

Author	Pubmed ID	Journal	Application
Sasa Liu	35716086	FEBS Lett	WB
Sasa Liu	35462099	Biochem Biophys Res Commun	WB
Hao Huang	38143048	Mol Cell Neurosci	WB

Storage

Storage:

Store at -20°C. Stable for one year after shipment.

Storage Buffer:

PBS with 0.02% sodium azide and 50% glycerol pH 7.3.

Aliquoting is unnecessary for -20°C storage

*** 20ul sizes contain 0.1% BSA

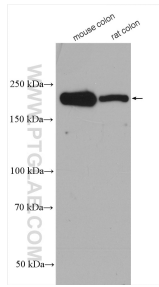
For technical support and original validation data for this product please contact:

T: 1 (888) 4PTGLAB (1-888-478-4522) (toll free in USA), or 1(312) 455-8498 (outside USA)

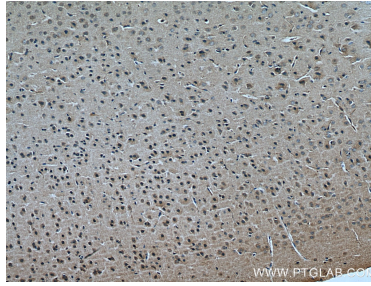
E: proteintech@ptglab.com
W: ptglab.com

This product is exclusively available under Proteintech Group brand and is not available to purchase from any other manufacturer.

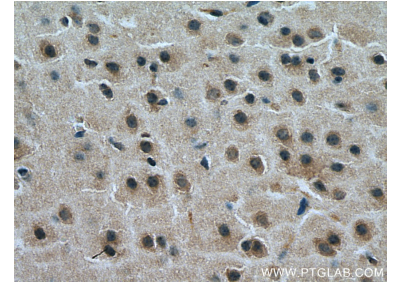
Selected Validation Data



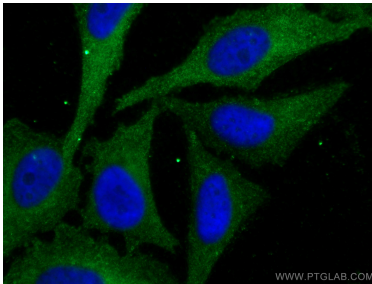
Various lysates were subjected to SDS PAGE followed by western blot with 19740-1-AP (KALRN antibody) at dilution of 1:2000 incubated at room temperature for 1.5 hours.



Immunohistochemical analysis of paraffin-embedded mouse brain tissue slide using 19740-1-AP (KALRN antibody) at dilution of 1:200 (under 10x lens). Heat mediated antigen retrieval with Tris-EDTA buffer (pH 9.0).



Immunohistochemical analysis of paraffin-embedded mouse brain tissue slide using 19740-1-AP (KALRN antibody) at dilution of 1:200 (under 40x lens). Heat mediated antigen retrieval with Tris-EDTA buffer (pH 9.0).



Immunofluorescent analysis of (-20°C Ethanol) fixed HeLa cells using 19740-1-AP (KALRN antibody) at dilution of 1:100 and CoraLite488-Conjugated Goat Anti-Rabbit IgG(H+L).