

For Research Use Only

# RAB11B-Specific Polyclonal antibody

Catalog Number: 19742-1-AP

7 Publications



## Basic Information

### Catalog Number:

19742-1-AP

### Size:

150ul, Concentration: 400 ug/ml by Nanodrop;

### Source:

Rabbit

### Isotype:

IgG

### GenBank Accession Number:

NM\_004218

### GeneID (NCBI):

9230

### UNIPROT ID:

Q15907

### Full Name:

RAB11B, member RAS oncogene family

### Calculated MW:

24 kDa

### Observed MW:

24 kDa

### Purification Method:

Antigen affinity purification

### Recommended Dilutions:

WB 1:300-1:600  
IP 0.5-4.0 ug for 1.0-3.0 mg of total protein lysate  
IHC 1:20-1:200

## Applications

### Tested Applications:

WB, IP, IHC, ELISA

### Cited Applications:

WB, IHC, IF, IP

### Species Specificity:

human, mouse, rat

### Cited Species:

human, mouse, rat, canine

### Positive Controls:

**WB** : human brain tissue, HEK-293 cells, C6 cells, PC-12 cells, fetal human brain tissue, human testis tissue, mouse testis tissue, HeLa cells

**IP** : mouse brain tissue,

**IHC** : human lung tissue, human brain tissue, human placenta tissue

**Note-IHC: suggested antigen retrieval with TE buffer pH 9.0; (\*) Alternatively, antigen retrieval may be performed with citrate buffer pH 6.0**

## Background Information

RAB11B, also named as YPT3, belongs to the small GTPase superfamily and Rab family. RAB11B possesses GTPase activity. The antibody is specific to RAN11B. The antibody has no cross reaction to RAB11A.

## Notable Publications

Author	Pubmed ID	Journal	Application
Hiroshi Gomi	28914590	J Histochem Cytochem	WB,IHC
Yu Lian	30326930	J Exp Clin Cancer Res	WB
Wataru Otsu	30819798	J Neurosci	WB,IF

## Storage

### Storage:

Store at -20°C. Stable for one year after shipment.

### Storage Buffer:

PBS with 0.02% sodium azide and 50% glycerol pH 7.3.

Aliquoting is unnecessary for -20°C storage

\*\*\* 20ul sizes contain 0.1% BSA

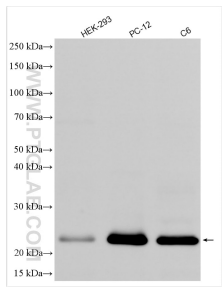
For technical support and original validation data for this product please contact:

T: 1 (888) 4PTGLAB (1-888-478-4522) (toll free in USA), or 1(312) 455-8498 (outside USA)

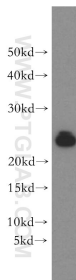
E: [proteintech@ptglab.com](mailto:proteintech@ptglab.com)  
W: [ptglab.com](http://ptglab.com)

This product is exclusively available under Proteintech Group brand and is not available to purchase from any other manufacturer.

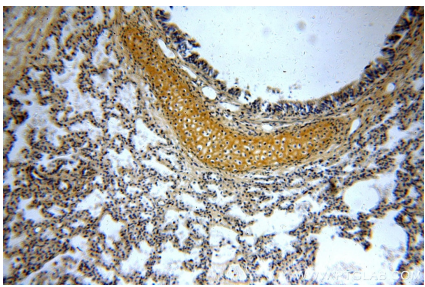
Selected Validation Data



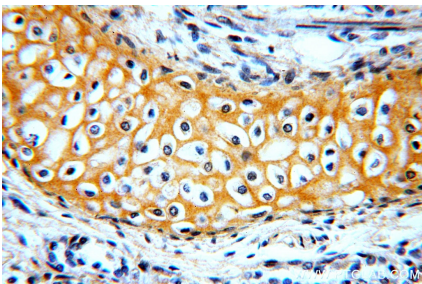
Various lysates were subjected to SDS PAGE followed by western blot with 19742-1-AP (RAB11B-Specific antibody) at dilution of 1:1500 incubated at room temperature for 1.5 hours.



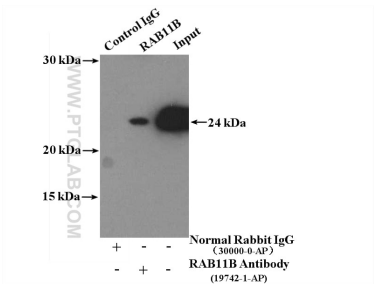
human brain tissue were subjected to SDS PAGE followed by western blot with 19742-1-AP (RAB11B-Specific antibody) at dilution of 1:300 incubated at room temperature for 1.5 hours.



Immunohistochemical analysis of paraffin-embedded human lung using 19742-1-AP (RAB11B-Specific antibody) at dilution of 1:100 (under 10x lens).



Immunohistochemical analysis of paraffin-embedded human lung using 19742-1-AP (RAB11B-Specific antibody) at dilution of 1:100 (under 40x lens).



IP result of anti-RAB11B-Specific (IP:19742-1-AP, 4ug; Detection:19742-1-AP 1:1000) with mouse brain tissue lysate 3200 ug.