

For Research Use Only

# WASF4-Specific Polyclonal antibody

Catalog Number: 19755-1-AP



## Basic Information

<b>Catalog Number:</b> 19755-1-AP	<b>GenBank Accession Number:</b> Q8IV90	<b>Purification Method:</b> Antigen affinity purification
<b>Size:</b> 150ul , Concentration: 1400 ug/ml by Nanodrop;	<b>GeneID (NCBI):</b> 644739	<b>Recommended Dilutions:</b> WB 1:500-1:2400 IF/ICC 1:10-1:100
<b>Source:</b> Rabbit	<b>Full Name:</b> WAS protein family, member 4	
<b>Isotype:</b> IgG	<b>Calculated MW:</b> 68 kDa	
	<b>Observed MW:</b> 68 kDa	

## Applications

<b>Tested Applications:</b> WB, IF/ICC, ELISA	<b>Positive Controls:</b>
<b>Species Specificity:</b> human, mouse	<b>WB :</b> mouse brain tissue, <b>IF/ICC :</b> HepG2 cells,

## Background Information

WASF4, also named as SCAR2, belongs to the SCAR/WAVE family. WASF4 is a downstream effector molecule which involved in the transmission of signals from tyrosine kinase receptors and small GTPases to the actin cytoskeleton. The antibody is specific to WASF4.

## Storage

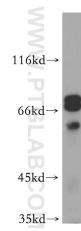
**Storage:**  
Store at -20°C. Stable for one year after shipment.  
**Storage Buffer:**  
PBS with 0.02% sodium azide and 50% glycerol pH 7.3.  
**Aliquoting is unnecessary for -20°C storage**

\*\*\* 20ul sizes contain 0.1% BSA

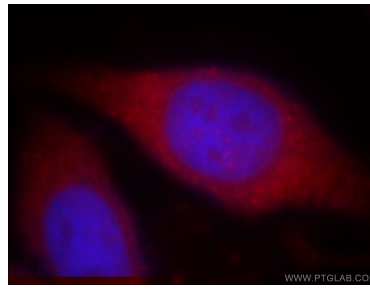
For technical support and original validation data for this product please contact:  
T: 1 (888) 4PTGLAB (1-888-478-4522) (toll free in USA), or 1(312) 455-8498 (outside USA)  
E: [proteintech@ptglab.com](mailto:proteintech@ptglab.com)  
W: [ptglab.com](http://ptglab.com)

This product is exclusively available under Proteintech Group brand and is not available to purchase from any other manufacturer.

## Selected Validation Data



mouse brain tissue were subjected to SDS PAGE followed by western blot with 19755-1-AP (WASF4-Specific antibody) at dilution of 1:300 incubated at room temperature for 1.5 hours.



Immunofluorescent analysis of HepG2 cells, using WASF4 antibody 19755-1-AP at 1:25 dilution and Rhodamine-labeled goat anti-rabbit IgG (red). Blue pseudocolor = DAPI (fluorescent DNA dye).