

For Research Use Only

ADRA1A-Specific Polyclonal antibody

Catalog Number: 19777-1-AP

Featured Product

8 Publications



Basic Information

Catalog Number:

19777-1-AP

Size:

150ul, Concentration: 260 ug/ml by Nanodrop and 207 ug/ml by Bradford method using BSA as the standard;

Source:

Rabbit

Isotype:

IgG

GenBank Accession Number:

NM_000680

GeneID (NCBI):

148

UNIPROT ID:

P35348

Full Name:

adrenergic, alpha-1A-, receptor

Calculated MW:

51 kDa

Observed MW:

52 kDa

Purification Method:

Antigen affinity purification

Recommended Dilutions:

WB: 1:500-1:2000

FC (Intra): 0.25 ug per 10⁶ cells in a 100 µl suspension

Applications

Tested Applications:

WB, ELISA

Cited Applications:

WB, IHC, IF

Species Specificity:

human, mouse, rat

Cited Species:

human, mouse, rat

Positive Controls:

WB : mouse heart tissue, HeLa cells, mouse brain tissue

FC (Intra) : HepG2 cells,

Background Information

ADRA1A, also named as ADRA1C, belongs to the G-protein coupled receptor 1 family. ADRA1A mediates its action by association with G proteins that activate a phosphatidylinositol-calcium second messenger system. Its effect is mediated by G(q) and G(11) proteins. The antibody is specific to ADRA1A.

Notable Publications

Author	Pubmed ID	Journal	Application
Miles Frost	32971843	Pharmaceuticals (Basel)	IHC,IF
Jun-Jie Wang	26545627	Vascul Pharmacol	WB
Miaomiao Zhu	35252820	iScience	WB

Storage

Storage:

Store at -20°C. Stable for one year after shipment.

Storage Buffer:

PBS with 0.02% sodium azide and 50% glycerol, pH7.3

Aliquoting is unnecessary for -20°C storage

*** 20ul sizes contain 0.1% BSA

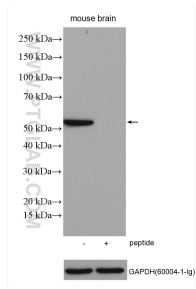
For technical support and original validation data for this product please contact:

T: 1 (888) 4PTGLAB (1-888-478-4522) (toll free in USA), or 1(312) 455-8498 (outside USA)

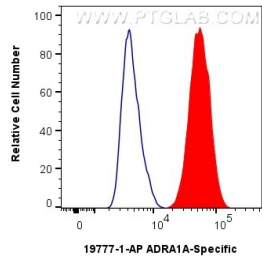
E: proteintech@ptglab.com
W: ptglab.com

This product is exclusively available under Proteintech Group brand and is not available to purchase from any other manufacturer.

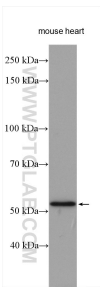
Selected Validation Data



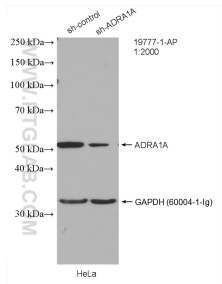
mouse brain tissue lysates were subjected to SDS PAGE followed by western blot with 19777-1-AP (ADRA1A-Specific antibody) at dilution of 1:1000 incubated at room temperature for 1.5 hours without or with blocking peptide (1.4 ug peptide was used to block the binding of 1.0 ug antibody).



1x10⁶ HepG2 cells were intracellularly stained with 0.25 ug ADRA1A-Specific Polyclonal antibody (19777-1-AP) and CoraLite®488-Conjugated Goat Anti-Rabbit IgG(H+L) (SA00013-2)(red), or 0.25 ug Rabbit IgG control Rabbit PolyAb (30000-0-AP) (blue). Cells were fixed with 4% PFA and permeabilized with Flow Cytometry Perm Buffer (PF00011-C).



mouse heart tissue were subjected to SDS PAGE followed by western blot with 19777-1-AP (ADRA1A-Specific antibody) at dilution of 1:1000 incubated at room temperature for 1.5 hours.



WB result of ADRA1A-Specific antibody (19777-1-AP; 1:2000; incubated at room temperature for 1.5 hours) with sh-Control and sh-ADRA1A-Specific transfected HeLa cells.