

For Research Use Only

# ADRA1A-Specific Polyclonal antibody, PBS Only

Catalog Number: 19777-1-PBS

Featured Product



## Basic Information

**Catalog Number:**

19777-1-PBS

**Size:**

100ug, Concentration: 1 mg/ml by  
Nanodrop;

**Source:**

Rabbit

**Isotype:**

IgG

**GenBank Accession Number:**

NM\_000680

**GeneID (NCBI):**

148

**UNIPROT ID:**

P35348

**Full Name:**

adrenergic, alpha-1A-, receptor

**Calculated MW:**

51 kDa

**Observed MW:**

52 kDa

**Purification Method:**

Antigen affinity purification

## Applications

**Tested Applications:**

WB, Indirect ELISA

**Species Specificity:**

human, mouse, rat

## Background Information

ADRA1A, also named as ADRA1C, belongs to the G-protein coupled receptor 1 family. ADRA1A mediates its action by association with G proteins that activate a phosphatidylinositol-calcium second messenger system. Its effect is mediated by G(q) and G(11) proteins. The antibody is specific to ADRA1A.

## Storage

**Storage:**

Store at -80°C.

**Storage Buffer:**

PBS Only

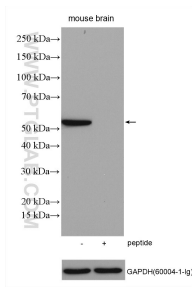
For technical support and original validation data for this product please contact:

T: 1 (888) 4PTGLAB (1-888-478-4522) (toll free  
in USA), or 1(312) 455-8498 (outside USA)

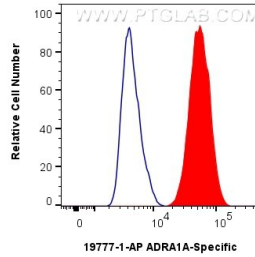
E: [proteintech@ptglab.com](mailto:proteintech@ptglab.com)  
W: [ptglab.com](http://ptglab.com)

This product is exclusively available under Proteintech Group brand and is not available to purchase from any other manufacturer.

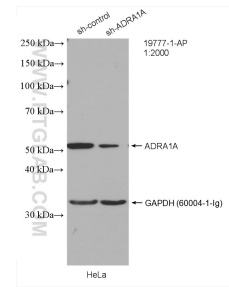
## Selected Validation Data



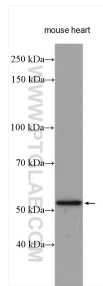
mouse brain tissue lysates were subjected to SDS PAGE followed by western blot with 19777-1-AP (ADRA1A-Specific antibody) at dilution of 1:1000 incubated at room temperature for 1.5 hours without or with blocking peptide (1.4 ug peptide was used to block the binding of 1.0 ug antibody). This data was developed using the same antibody clone with 19777-1-PBS in a different storage buffer formulation.



$1 \times 10^6$  HepG2 cells were intracellularly stained with 0.25 ug ADRA1A-Specific Polyclonal antibody (19777-1-AP) and CoraLite®488-Conjugated Goat Anti-Rabbit IgG(H+L) (SA00013-2)(red), or 0.25 ug Rabbit IgG control Rabbit PolyAb (30000-O-AP) (blue). Cells were fixed with 4% PFA and permeabilized with Flow Cytometry Perm Buffer (PF00011-C). This data was developed using the same antibody clone with 19777-1-PBS in a different storage buffer formulation.



WB result of ADRA1A-Specific antibody (19777-1-AP; 1:2000; incubated at room temperature for 1.5 hours) with sh-Control and sh-ADRA1A-Specific transfected HeLa cells. This data was developed using the same antibody clone with 19777-1-PBS in a different storage buffer formulation.



mouse heart tissue were subjected to SDS PAGE followed by western blot with 19777-1-AP (ADRA1A-Specific antibody) at dilution of 1:1000 incubated at room temperature for 1.5 hours. This data was developed using the same antibody clone with 19777-1-PBS in a different storage buffer formulation.