

For Research Use Only

ATP7B-Specific Polyclonal antibody

Catalog Number: 19786-1-AP

9 Publications



Basic Information

Catalog Number:

19786-1-AP

Size:

150ul, Concentration: 750 ug/ml by Nanodrop;

Source:

Rabbit

Isotype:

IgG

GenBank Accession Number:

NM_000053

GeneID (NCBI):

540

UNIPROT ID:

P35670

Full Name:

ATPase, Cu⁺⁺ transporting, beta polypeptide

Calculated MW:

157 kDa

Observed MW:

150 kDa

Purification Method:

Antigen affinity purification

Recommended Dilutions:

WB 1:5000-1:50000

IHC 1:50-1:500

IF-P 1:50-1:500

IF/ICC 1:200-1:800

Applications

Tested Applications:

WB, IHC, IF/ICC, IF-P, ELISA

Cited Applications:

WB, IHC, IF

Species Specificity:

human, mouse, rat

Cited Species:

human, mouse, rat

Note-IHC: suggested antigen retrieval with TE buffer pH 9.0; (*) Alternatively, antigen retrieval may be performed with citrate buffer pH 6.0

Positive Controls:

WB: mouse liver tissue, rat liver tissue

IHC: human colon cancer tissue, mouse brain tissue

IF-P: mouse liver tissue,

IF/ICC: HepG2 cells,

Background Information

ATP7B, also named as PWD, WC1 and WND, belongs to the cation transport ATPase (P-type) family and Type IB subfamily. ATP7B is involved in the export of copper out of the cells, such as the efflux of hepatic copper into the bile. ATP7B catalyzes the reaction: ATP + H₂O + Cu²⁺(In) = ADP + phosphate + Cu²⁺(Out). Defects in ATP7B are the cause of Wilson disease (WD). This antibody is specific to ATP7B.

Notable Publications

Author	Pubmed ID	Journal	Application
Anita Berzina	30344245	Medicina (Kaunas)	IF
Jianjian Dong	39334421	J Neuroinflammation	WB
Ning Wang	39001628	Adv Healthc Mater	WB

Storage

Storage:

Store at -20°C. Stable for one year after shipment.

Storage Buffer:

PBS with 0.02% sodium azide and 50% glycerol pH 7.3.

Aliquoting is unnecessary for -20°C storage

*** 20ul sizes contain 0.1% BSA

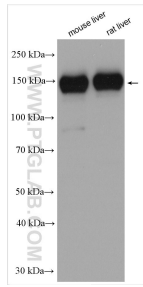
For technical support and original validation data for this product please contact:

T: 1 (888) 4PTGLAB (1-888-478-4522) (toll free in USA), or 1(312) 455-8498 (outside USA)

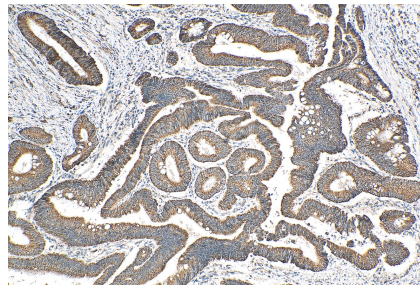
E: proteintech@ptglab.com
W: ptglab.com

This product is exclusively available under Proteintech Group brand and is not available to purchase from any other manufacturer.

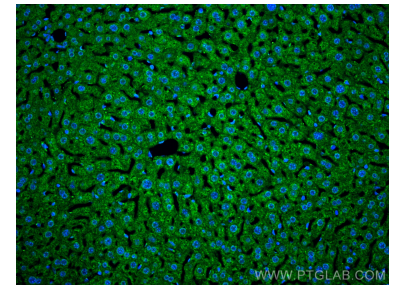
Selected Validation Data



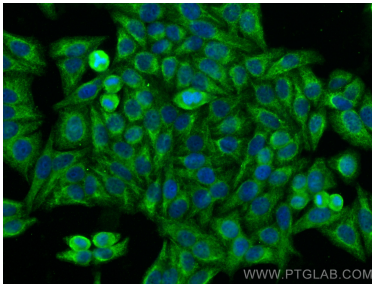
Mouse liver and rat liver tissues were subjected to SDS PAGE followed by western blot with 19786-1-AP (ATP7B-Specific antibody) at dilution of 1:10000 incubated at room temperature for 1.5 hours.



Immunohistochemical analysis of paraffin-embedded human colon cancer tissue slide using 19786-1-AP (ATP7B-Specific antibody) at dilution of 1:200 (under 10x lens). Heat mediated antigen retrieval with Tris-EDTA buffer (pH 9.0).



Immunofluorescent analysis of (4% PFA) fixed paraffin-embedded mouse liver tissue using ATP7B-Specific antibody (19786-1-AP) at dilution of 1:200 and CoraLite®488-Conjugated Goat Anti-Rabbit IgG(H+L) (SA00013-2). Heat mediated antigen retrieval with Tris-EDTA buffer (pH 9.0).



Immunofluorescent analysis of (-20°C Ethanol) fixed HepG2 cells using ATP7B-Specific antibody (19786-1-AP) at dilution of 1:400 and CoraLite®488-Conjugated Goat Anti-Rabbit IgG(H+L) (SA00013-2).