

For Research Use Only

# Catalase-Specific Polyclonal antibody

Catalog Number: 19792-1-AP

6 Publications



## Basic Information

### Catalog Number:

19792-1-AP

### Size:

150ul, Concentration: 400 ug/ml by Nanodrop and 267 ug/ml by Bradford method using BSA as the standard;

### Source:

Rabbit

### Isotype:

IgG

### GenBank Accession Number:

NM\_001752

### GeneID (NCBI):

847

### UNIPROT ID:

P04040

### Full Name:

catalase

### Calculated MW:

60 kDa

### Observed MW:

60 kDa

### Purification Method:

Antigen affinity purification

### Recommended Dilutions:

WB 1:1000-1:4000

IHC 1:20-1:200

IF/ICC 1:10-1:100

## Applications

### Tested Applications:

WB, IHC, IF/ICC, ELISA

### Cited Applications:

WB, IHC

### Species Specificity:

human

### Cited Species:

human, mouse

### Positive Controls:

WB : HT-1080 cells, HeLa cells

IHC : human hepatocirrhosis tissue,

IF/ICC : Hela cells, HepG2 cells

**Note-IHC: suggested antigen retrieval with TE buffer pH 9.0; (\*) Alternatively, antigen retrieval may be performed with citrate buffer pH 6.0**

## Background Information

Catalase belongs to the catalase family. CAT occurs in almost all aerobically respiring organisms and serves to protect cells from the toxic effects of hydrogen peroxide. CAT promotes the growth of cells including T-cells, B-cells, myeloid leukemia cells, melanoma cells, mastocytoma cells, and normal and transformed fibroblast cells. CAT catalyzes the reaction:  $2\text{H}_2\text{O}_2 = \text{O}_2 + 2\text{H}_2\text{O}$ . Defects in CAT are the cause of acatalasia (ACATLAS) which is also known as acatalasemia. The antibody is specific to CAT.

## Notable Publications

Author	Pubmed ID	Journal	Application
BuChun Zhang	35082966	Oxid Med Cell Longev	WB
Feilin Liu	31885808	Oxid Med Cell Longev	WB
Lihao Jin	39264244	Adv Sci (Weinh)	WB

## Storage

### Storage:

Store at -20°C. Stable for one year after shipment.

### Storage Buffer:

PBS with 0.02% sodium azide and 50% glycerol pH 7.3.

Aliquoting is unnecessary for -20°C storage

\*\*\* 20ul sizes contain 0.1% BSA

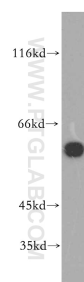
For technical support and original validation data for this product please contact:

T: 1 (888) 4PTGLAB (1-888-478-4522) (toll free in USA), or 1(312) 455-8498 (outside USA)

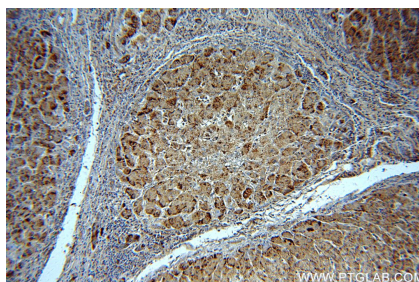
E: [proteintech@ptglab.com](mailto:proteintech@ptglab.com)  
W: [ptglab.com](http://ptglab.com)

This product is exclusively available under Proteintech Group brand and is not available to purchase from any other manufacturer.

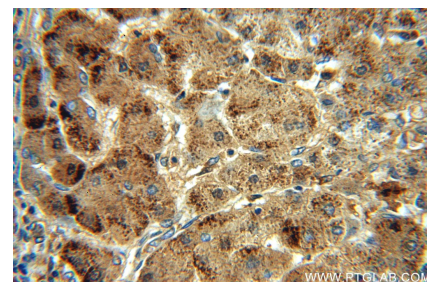
## Selected Validation Data



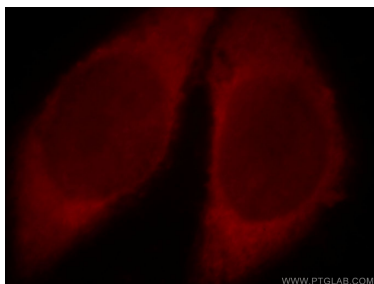
HT-1080 cells were subjected to SDS PAGE followed by western blot with 19792-1-AP (Catalase-Specific antibody) at dilution of 1:1000 incubated at room temperature for 1.5 hours.



Immunohistochemical analysis of paraffin-embedded human hepatocirrhosis using 19792-1-AP (Catalase-Specific antibody) at dilution of 1:100 (under 10x lens).



Immunohistochemical analysis of paraffin-embedded human hepatocirrhosis using 19792-1-AP (Catalase-Specific antibody) at dilution of 1:100 (under 40x lens).



Immunofluorescent analysis of HeLa cells, using CAT antibody 19792-1-AP at 1:25 dilution and Rhodamine-labeled goat anti-rabbit IgG (red).