

For Research Use Only

# CCT6A-Specific Polyclonal antibody



Catalog Number: 19793-1-AP

5 Publications

## Basic Information

<b>Catalog Number:</b> 19793-1-AP	<b>GenBank Accession Number:</b> NM_001762	<b>Purification Method:</b> Antigen affinity purification
<b>Size:</b> 150ul , Concentration: 150 µg/ml by Nanodrop and 133 µg/ml by Bradford method using BSA as the standard;	<b>GeneID (NCBI):</b> 908	<b>Recommended Dilutions:</b> WB 1:500-1:1000
<b>Source:</b> Rabbit	<b>Full Name:</b> chaperonin containing TCP1, subunit 6A (zeta 1)	
<b>Isotype:</b> IgG	<b>Calculated MW:</b> 58 kDa	
	<b>Observed MW:</b> 58 kDa	

## Applications

**Tested Applications:**  
WB, ELISA

**Cited Applications:**  
IF, IHC, WB

**Species Specificity:**  
human, mouse

**Cited Species:**  
human, mouse

**Positive Controls:**

WB : A431 cells, mouse brain tissue, A549 cells. HeLa cells, mouse liver tissue, EC109 cells

## Background Information

CCT6A, also named as CCT6, CCTZ, CCT-zeta, Tcp20 and HTR3, belongs to the TCP-1 chaperonin family. CCT6A is a molecular chaperone which assists the folding of proteins upon ATP hydrolysis. CCT6A is known to play a role, in vitro, in the folding of actin and tubulin. The antibody has no cross reaction to CCT6B.

## Notable Publications

Author	Pubmed ID	Journal	Application
Hussein Kaddour	31676584	Mol Cell Proteomics	WB
Yuanyuan Zhang	26739059	Cancer Lett	WB
Xinyu Ma	35366418	Cell	WB,IF

## Storage

**Storage:**

Store at -20°C. Stable for one year after shipment.

**Storage Buffer:**

PBS with 0.02% sodium azide and 50% glycerol pH 7.3.

Aliquoting is unnecessary for -20°C storage

\*\*\* 20ul sizes contain 0.1% BSA

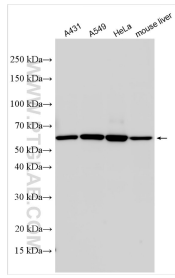
For technical support and original validation data for this product please contact:

T: 1 (888) 4PTGLAB (1-888-478-4522) (toll free in USA), or 1(312) 455-8498 (outside USA)

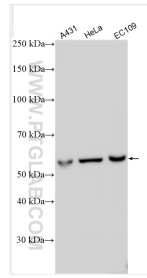
E: proteintech@ptglab.com  
W: ptglab.com

This product is exclusively available under Proteintech Group brand and is not available to purchase from any other manufacturer.

## Selected Validation Data



Various lysates were subjected to SDS PAGE followed by western blot with 19793-1-AP (CCT6A-Specific antibody) at dilution of 1:500 incubated at room temperature for 1.5 hours.



Various lysates were subjected to SDS PAGE followed by western blot with 19793-1-AP (CCT6A-Specific antibody) at dilution of 1:500 incubated at room temperature for 1.5 hours.