

For Research Use Only

CCT6A-Specific Polyclonal antibody, PBS Only

Catalog Number: 19793-1-PBS



Basic Information

Catalog Number:

19793-1-PBS

Size:

100ug , Concentration: 1 mg/ml by
Nanodrop;

Source:

Rabbit

Isotype:

IgG

GenBank Accession Number:

NM_001762

GeneID (NCBI):

908

UNIPROT ID:

P40227

Full Name:

chaperonin containing TCP1, subunit
6A (zeta 1)

Calculated MW:

58 kDa

Observed MW:

58 kDa

Purification Method:

Antigen affinity purification

Applications

Tested Applications:

WB, IHC, IF/ICC, Indirect ELISA

Species Specificity:

human, mouse

Background Information

CCT6A, also named as CCT6, CCTZ, CCT-zeta, Tcp20 and HTR3, belongs to the TCP-1 chaperonin family. CCT6A is a molecular chaperone which assists the folding of proteins upon ATP hydrolysis. CCT6A is known to play a role, in vitro, in the folding of actin and tubulin. The antibody has no cross reaction to CCT6B.

Storage

Storage:

Store at -80°C.

Storage Buffer:

PBS only, pH7.3

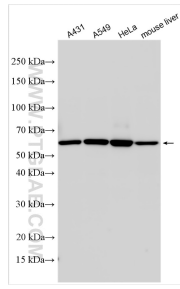
For technical support and original validation data for this product please contact:

T: 1 (888) 4PTGLAB (1-888-478-4522) (toll free
in USA), or 1(312) 455-8498 (outside USA)

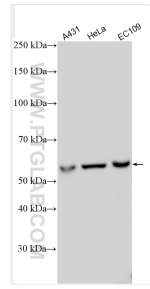
E: proteintech@ptglab.com
W: ptglab.com

This product is exclusively available under Proteintech Group brand and is not available to purchase from any other manufacturer.

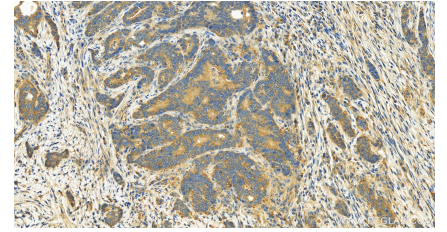
Selected Validation Data



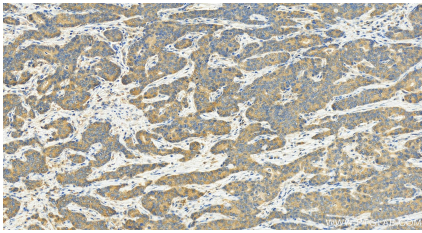
Various lysates were subjected to SDS PAGE followed by western blot with 19793-1-AP (CCT6A-Specific antibody) at dilution of 1:500 incubated at room temperature for 1.5 hours. This data was developed using the same antibody clone with 19793-1-PBS in a different storage buffer formulation.



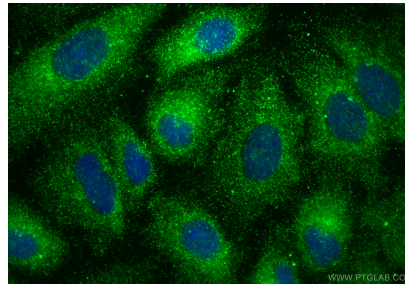
Various lysates were subjected to SDS PAGE followed by western blot with 19793-1-AP (CCT6A-Specific antibody) at dilution of 1:500 incubated at room temperature for 1.5 hours. This data was developed using the same antibody clone with 19793-1-PBS in a different storage buffer formulation.



Immunohistochemical analysis of paraffin-embedded stomach cancer slide using 19793-1-AP (CCT6A-Specific antibody) at dilution of 1:100 (under 20x lens). Heat mediated antigen retrieval with Tris-EDTA buffer (pH 9.0). This data was developed using the same antibody clone with 19793-1-PBS in a different storage buffer formulation.



Immunohistochemical analysis of paraffin-embedded stomach cancer slide using 19793-1-AP (CCT6A-Specific antibody) at dilution of 1:100 (under 20x lens). Heat mediated antigen retrieval with Tris-EDTA buffer (pH 9.0). This data was developed using the same antibody clone with 19793-1-PBS in a different storage buffer formulation.



Immunofluorescent analysis of (-20°C Methanol) fixed A549 cells using CCT6A-Specific antibody (19793-1-AP) at dilution of 1:400 and Coralite® 488-Conjugated Goat Anti-Rabbit IgG(H+L) (SA00013-2). This data was developed using the same antibody clone with 19793-1-PBS in a different storage buffer formulation.