

For Research Use Only

# Collagen Type XIII Polyclonal antibody, PBS Only

Catalog Number: 19801-1-PBS



## Basic Information

<b>Catalog Number:</b> 19801-1-PBS	<b>GenBank Accession Number:</b> NM_001130103	<b>Purification Method:</b> Antigen affinity purification
<b>Size:</b> 100ug , Concentration: 1 mg/ml by Nanodrop;	<b>GeneID (NCBI):</b> 1305	
<b>Source:</b> Rabbit	<b>UNIPROT ID:</b> Q5TAT6	
<b>Isotype:</b> IgG	<b>Full Name:</b> collagen, type XIII, alpha 1	
	<b>Calculated MW:</b> 70 kDa	
	<b>Observed MW:</b> 62-70 kDa, 85-100 kDa	

## Applications

**Tested Applications:**  
WB, Indirect ELISA

**Species Specificity:**  
human, mouse

## Background Information

COL13A1 is involved in cell-matrix and cell-cell adhesion interactions that are required for normal development. COL13A1 may participate in the linkage between muscle fiber and basement membrane. COL13A1 may play a role in endochondral ossification of bone and branching morphogenesis of lung. COL13A1 can bind heparin. The antibody can recognize all the isoforms except isoform9 of COL13A1. This antibody is specific to COL13A1. It is predicted molecular weight is 62-70 kDa, and it is also reported as 85-95 kDa (PMID:11223332).

## Storage

**Storage:**  
Store at -80°C.

**Storage Buffer:**  
PBS only, pH7.3

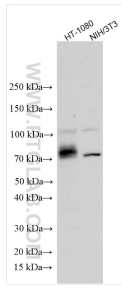
For technical support and original validation data for this product please contact:

T: 1 (888) 4PTGLAB (1-888-478-4522) (toll free  
in USA), or 1(312) 455-8498 (outside USA)

E: [proteintech@ptglab.com](mailto:proteintech@ptglab.com)  
W: [ptglab.com](http://ptglab.com)

**This product is exclusively available under Proteintech Group brand and is not available to purchase from any other manufacturer.**

## Selected Validation Data



Various lysates were subjected to SDS PAGE followed by western blot with 19801-1-AP (Collagen Type XIII antibody) at dilution of 1:500 incubated at room temperature for 1.5 hours. This data was developed using the same antibody clone with 19801-1-PBS in a different storage buffer formulation.