

For Research Use Only

Collagen Type XVI Polyclonal antibody, PBS Only

Catalog Number: 19802-1-PBS



Basic Information

Catalog Number: 19802-1-PBS	GenBank Accession Number: NM_001856	Purification Method: Antigen affinity purification
Size: 100ug , Concentration: 1 mg/ml by Nanodrop;	GeneID (NCBI): 1307	
Source: Rabbit	UNIPROT ID: Q07092	
Isotype: IgG	Full Name: collagen, type XVI, alpha 1	
	Calculated MW: 158 kDa	
	Observed MW: 158 kDa	

Applications

Tested Applications:
WB, IF-P, Indirect ELISA

Species Specificity:
human, mouse, rat

Background Information

COL16A1, also named as FP1572, belongs to the fibril-associated collagens with interrupted helices (FACIT) family. COL16A1 is involved in mediating cell attachment and inducing integrin-mediated cellular reactions, such as cell spreading and alterations in cell morphology. The antibody is specific to COL16A1.

Storage

Storage:
Store at -80°C.

Storage Buffer:
PBS Only

For technical support and original validation data for this product please contact:

T: 1 (888) 4PTGLAB (1-888-478-4522) (toll free
in USA), or 1(312) 455-8498 (outside USA)

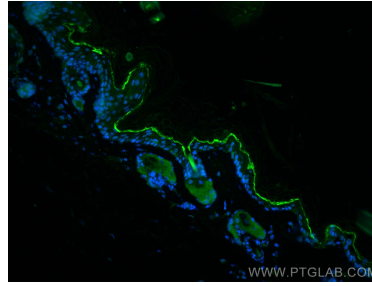
E: proteintech@ptglab.com
W: ptglab.com

This product is exclusively available under Proteintech Group brand and is not available to purchase from any other manufacturer.

Selected Validation Data



human placenta tissue were subjected to SDS PAGE followed by western blot with 19802-1-AP (Collagen Type XVI antibody) at dilution of 1:1500 incubated at room temperature for 1.5 hours. This data was developed using the same antibody clone with 19802-1-PBS in a different storage buffer formulation.



Immunofluorescent analysis of (4% PFA) fixed paraffin-embedded mouse skin tissue using Collagen Type XVI antibody (19802-1-AP) at dilution of 1:200 and CoraLite®488-Conjugated AffiniPure Goat Anti-Rabbit IgG(H+L). Heat mediated antigen retrieval with Tris-EDTA buffer (pH 9.0). This data was developed using the same antibody clone with 19802-1-PBS in a different storage buffer formulation.