

# ATG16L1 Polyclonal antibody

Catalog Number: 19812-1-AP

16 Publications

## Basic Information

**Catalog Number:**

19812-1-AP

**Size:**

150ul, Concentration: 350 µg/ml by Nanodrop and 233 µg/ml by Bradford method using BSA as the standard;

**Source:**

Rabbit

**Isotype:**

IgG

**Immunogen Catalog Number:**

AG13844

**GenBank Accession Number:**

BC000061

**GeneID (NCBI):**

55054

**Full Name:**

ATG16 autophagy related 16-like 1 (Scerevisiae)

**Calculated MW:**

607 aa, 68 kDa

**Observed MW:**

63-71 kDa

**Purification Method:**

Antigen affinity purification

**Recommended Dilutions:**

WB 1:200-1:1000

IP 0.5-4.0 µg for IP and 1:200-1:1000

## Applications

**Tested Applications:**

IP, WB, ELISA

**Cited Applications:**

CoIP, IF, IHC, WB

**Species Specificity:**

human, mouse

**Cited Species:**

human, rat, mouse, pig

**Positive Controls:**

WB: mouse spleen tissue, MCF-7 cells, Jurkat cells, HEK-293T cells

IP: MCF-7 cells,

## Background Information

Human ATG16L1 is a 607 amino acid protein (~68 kDa) comprising three major domains: the N-terminal ATG5 binding domain (ATG5-BD), the central coiled-coil domain (CCD) and a predicted C-terminal WD40-domain. ATG16L1α and β (Atg16L1α, 63 kDa; and Atg16L1β, 71 kDa) are the major isoforms expressed in intestinal epithelium and macrophages, and all isoforms encode exon 9, which contains Thr 300. Atg16L1 mediates the cellular degradative process of autophagy and is considered a critical regulator of inflammation based on its genetic association with inflammatory bowel disease. ATG16L1 has been implicated in Crohn's disease. (PMID: 24553140, PMID: 22740627, PMID: 28685931)

## Notable Publications

Author	Pubmed ID	Journal	Application
Yunjing Zou	36362066	Int J Mol Sci	WB
Shuang-Zhou Peng	34645818	Nat Commun	IF
Yaling Li	33210714	Acta Biochim Biophys Sin (Shanghai)	WB

## Storage

**Storage:**

Store at -20°C. Stable for one year after shipment.

**Storage Buffer:**

PBS with 0.02% sodium azide and 50% glycerol pH 7.3.

Aliquoting is unnecessary for -20°C storage

\*\*\* 20ul sizes contain 0.1% BSA

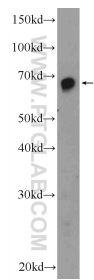
For technical support and original validation data for this product please contact:

T: 1 (888) 4PTGLAB (1-888-478-4522) (toll free in USA), or 1(312) 455-8498 (outside USA)

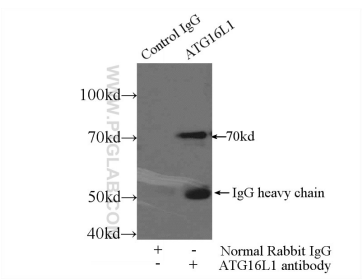
E: [proteintech@ptglab.com](mailto:proteintech@ptglab.com)  
W: [ptglab.com](http://ptglab.com)

This product is exclusively available under Proteintech Group brand and is not available to purchase from any other manufacturer.

Selected Validation Data



mouse spleen tissue were subjected to SDS PAGE followed by western blot with 19812-1-AP (ATG16L1 Antibody) at dilution of 1:300 incubated at room temperature for 1.5 hours.



IP Result of anti-ATG16L1 (IP:19812-1-AP, 4ug; Detection:19812-1-AP 1:300) with MCF-7 cells lysate 2000ug.